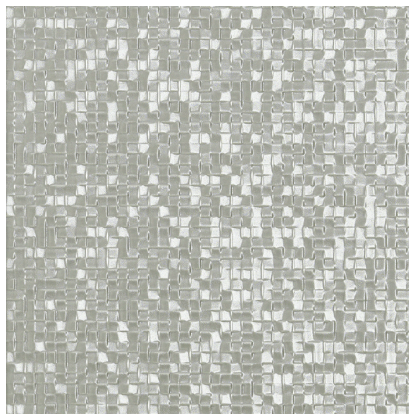


Model: CUBICA GRIS L 25X44,3(A)

Codes: 100322598

Water absorption: BIII - Revestimiento ($10\% \leq E \leq 20\%$)



DIMENSIONAL FEATURES

UNE-EN ISO 10545-2

Thickness	7 MM	+/-5%*
Width	248.4 MM	
Length	443 MM	
Length and width deviation	Below 0.15%	+/-0.3%*
Side straightness deviation	Below 0.15%	+/-0.3%*
Squareness deviation	Below 0.15%	+/-0.3%*
Surface flatness deviation	Below 0.15%	+/-0.4%*

*ISO-13006:2018 UNE-EN 14411:2016

MECHANICAL FEATURES

UNE-EN ISO 10545-4-6-7-11

Crazing resistance Resists 3 cycles

*ISO-13006:2018 UNE-EN 14411:2016

HYGIENIC FEATURES

UNE-EN ISO 10545-13-14:1995

Chemical resistance	Class "A" for swimming pools and cleaning products (resists attack). Minimum Class "B" for acids and bases	B Min.*
Stain resistance	Class 5. Easy cleaning with water	3 Min.*

*ISO-13006:2018 UNE-EN 14411:2016

SCOPE OF USE

Technical code-1	Use on walls	
------------------	--------------	--

PACKING

Sales units per box	1.661258 M2/BOX	
Sales units per pallet	112.965568 M2/PAL	
Sales units per unit	0.110751 M2/PIECE	

System Certification



Do not use cleaning agents containing hydrofluoric acid.

It is recommended to fix tiles with a minimum joint of 1,5 mm. Do not fix without joint.

For big sizes, it is recommended to fix with mortars containing polymeric additives and to use the double glueing technique.

Mosaic tiles must be grouted.

This document is only commercial and cannot be used as expert opinion, documentary evidence or in any legal or administrative procedure unless authorized by PORCELANOSA S.A.