

# the 29<sup>th</sup> edition

INTERNATIONAL EXHIBITION MUESTRA INTERNACIONAL



**butech**



## Index

### **butech products**

Adhesives, 4  
Grouting, 6  
Leveling spacers, 8  
Substrate preparation  
and waterproofing, 10  
Linear grates, 14  
Square grates, 15  
Profiles, 17

### **butech inspiration**

HIGHKER, 22  
PAR-KER, 26  
XTONE, 30  
Wall tiles, 32

### **Porcelanosa Offsite**

Monobath, 34  
Monobath eco, 38  
Modfacades, 40

### **Systems**

Plots and RAFx accessories, 44  
Floating stairs, 46  
butech projects, 48



## one-flex Premium

**one-flex Premium** is a type C2TES1 high-performance cement-based adhesive, as per EN 12004, for laying all kinds of ceramic tiles on the most used substrates in the building.

### Recommended uses:

- Floors and walls with rectified tiles
- Large format indoor porcelain wall tiles
- Large format interior porcelain floor tiles and outdoor use
- High traffic floor tiles
- Floor tiles on radiant heating

one-flex Premium blanco	100201526	bag 25 kg
one-flex Premium gris	100201543	bag 25 kg



## super-flex S2

**super-flex S2** is a type C2ES2 high-performance no dust cement-based adhesive, as per EN 12004, for laying all kinds of ceramic tiles on the most used substrates in the building industry. Specially recommended for laying large format, thin porcelain tiles like XTONE and XLIGHT.

### Recommended uses:

- Interior walls with slim tiles as XTONE and XLIGHT
- Floors and walls with XTONE and XLIGHT
- Large format indoor and outdoor ceramic wall tiles

super-flex S2	100142757	bag 15 kg
---------------	-----------	-----------



## colorstuk rapid

**colorstuk rapid n** is a type CG2 WA high-performance, cement-based grouting material as per EN 13888, for grouting joints up to 15 mm. Suitable for all kinds of ceramic tiles and natural stone, it is specially recommended for outdoor applications and permanently damp environments.

### Recommended uses

- Tile joints up to 15 mm
- Indoor wall and floor tiles
- Outdoor floors and terraces
- High traffic floor tiles

- |           |           |
|-----------|-----------|
| 100236463 | blanco    |
| 100275760 | perla     |
| 100236834 | gris      |
| 100236808 | beige     |
| 100331788 | caliza    |
| 100309550 | oak       |
| 100236794 | marfil    |
| 100236833 | caramelo  |
| 100236809 | marron    |
| 100236823 | tabaco    |
| 100236824 | moka      |
| 100236464 | manhattan |
| 100236449 | cemento   |
| 100236481 | antracita |
| 100236475 | negro     |



## epotech aqua

**epotech aqua** is a new line of epoxy putties for grouting tile joints. Specially recommended for application on mosaics and ceramic tiles with relief.

- |           |           |
|-----------|-----------|
| 100182223 | blanco    |
| 100182217 | marfil    |
| 100278474 | tabaco    |
| 100182222 | beige     |
| 100182208 | gris      |
| 100278467 | manhattan |
| 100278329 | cemento   |
| 100182213 | antracita |
| 100278500 | negro     |

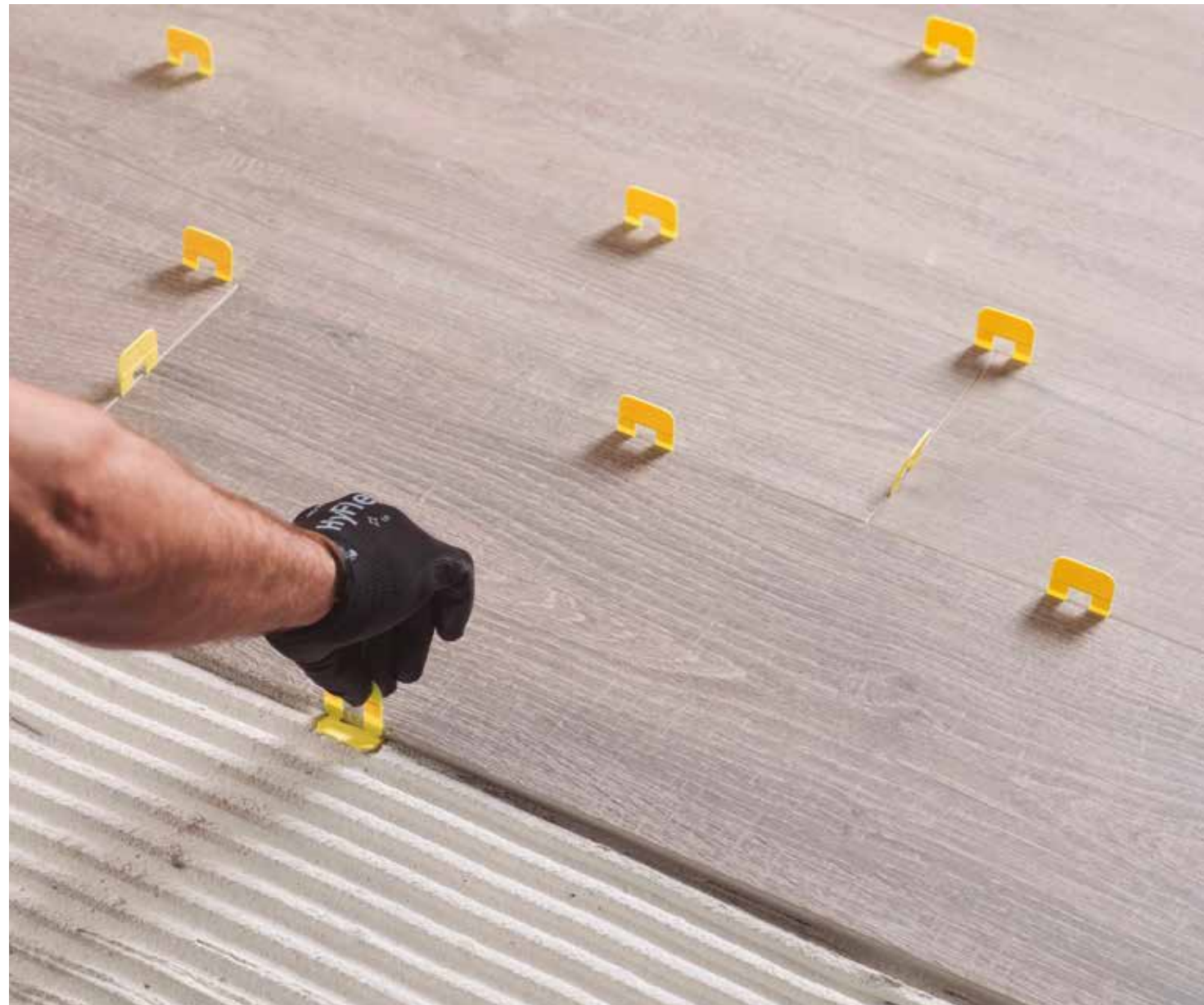


## epotech nature

**epotech nature** is a new micro grain porcelain grout for the sealing of joints in ceramic tiles with designs inspired by nature.

- |           |         |
|-----------|---------|
| 100177504 | ash     |
| 100177514 | maple   |
| 100177494 | beech   |
| 100204262 | honey   |
| 100177484 | oak     |
| 100177505 | iroko   |
| 100177513 | elm     |
| 100177512 | doussie |
| 100177485 | wenge   |



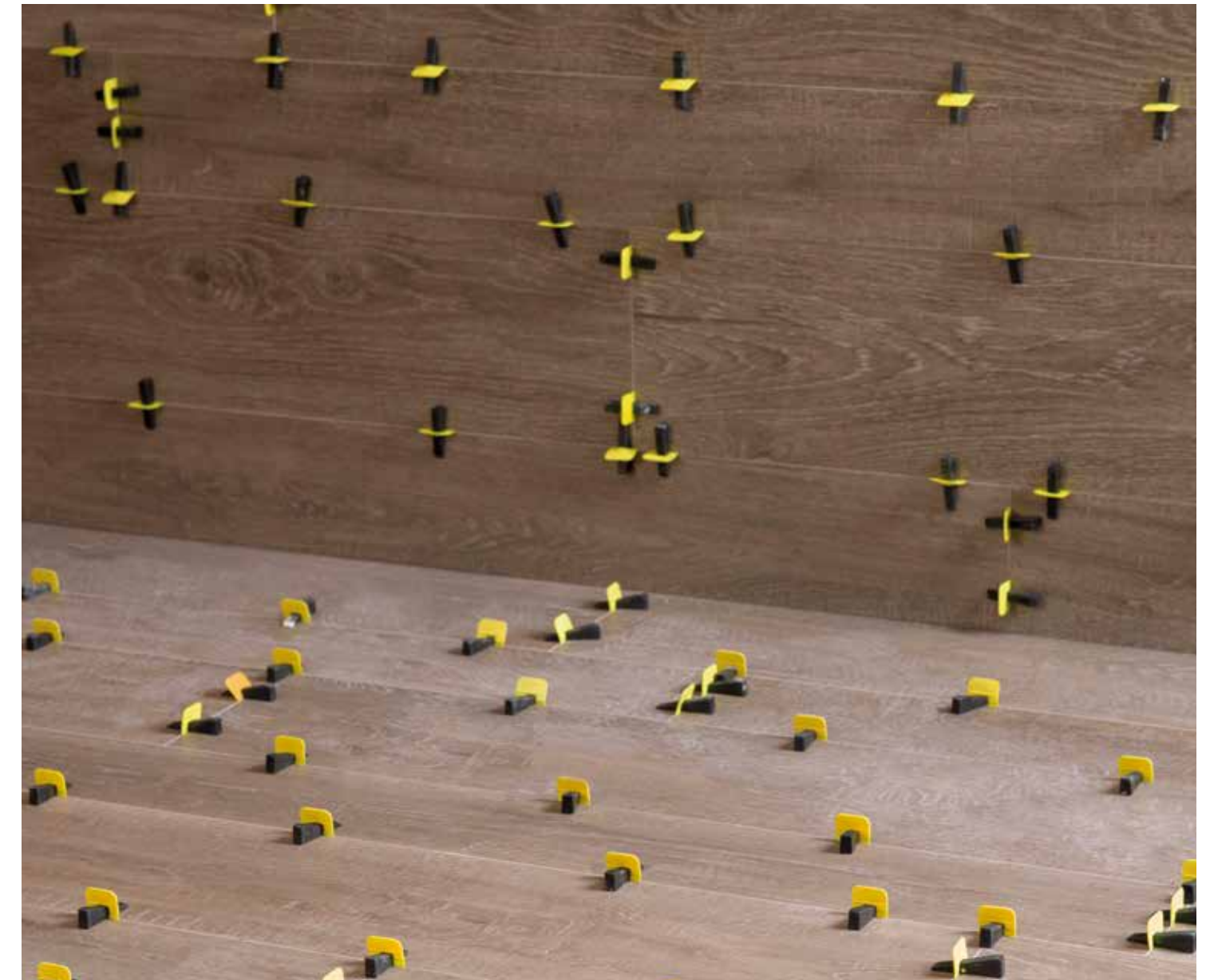
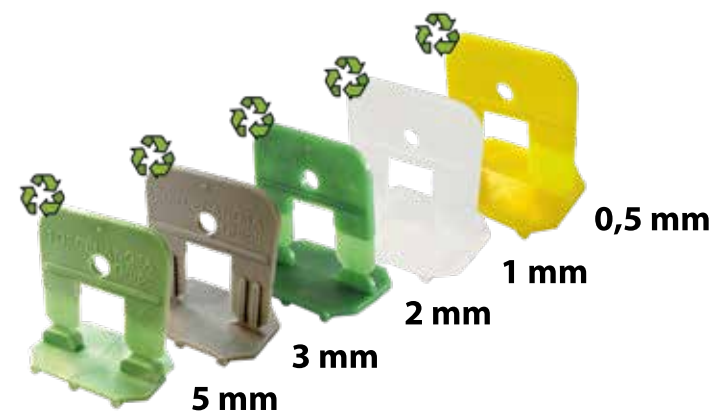


## self-leveling spacers

Leveling system for ceramic tiles. Eases ceramic tile laying and guarantees a perfectly flat surface of the final installation. The system consists of a new type of spacer with adjustable height that levels the surrounding tiles and prevents them from moving.

### Features

- Guarantees tiles are even
- Prevents tiles from moving due to laying errors or due to mortar setting
- Reduces retouching and laying times
- Suitable for 0,5-5 mm wide joints
- Suitable for floor and wall tiles of thickness between 7-15 mm.
- For thinner tiles use the supplementary lifting pieces
- The system consists of a spacer, a wedge and an adjusting tool



### self-leveling spacers for tiles 3 to 15 mm thick

100207811	0,5 mm spacer	100 ud/bag
100207797	0,5 mm spacer	300 ud/bag
100207740	0,5 mm spacer	500 ud/bag
100108026	1 mm spacer	100 ud/bag
100108027	1 mm spacer	300 ud/bag
100108028	1 mm spacer	500 ud/bag
100108029	2 mm spacer	100 ud/bag
100108030	2 mm spacer	300 ud/bag
100095382	2 mm spacer	500 ud/bag
100109070	3 mm spacer	100 ud/bag
100109071	3 mm spacer	300 ud/bag
100109072	3 mm spacer	500 ud/bag
100275166	5 mm spacer	100 ud/bag
100275156	5 mm spacer	300 ud/bag
100275138	5 mm spacer	500 ud/bag

### self-leveling spacers for tiles 16 to 22 mm thick

100225039	2 mm spacer	100 ud/bag
100315637	5 mm spacer	100 ud/bag
100315638	5 mm spacer	300 ud/bag
100315639	5 mm spacer	500 ud/bag

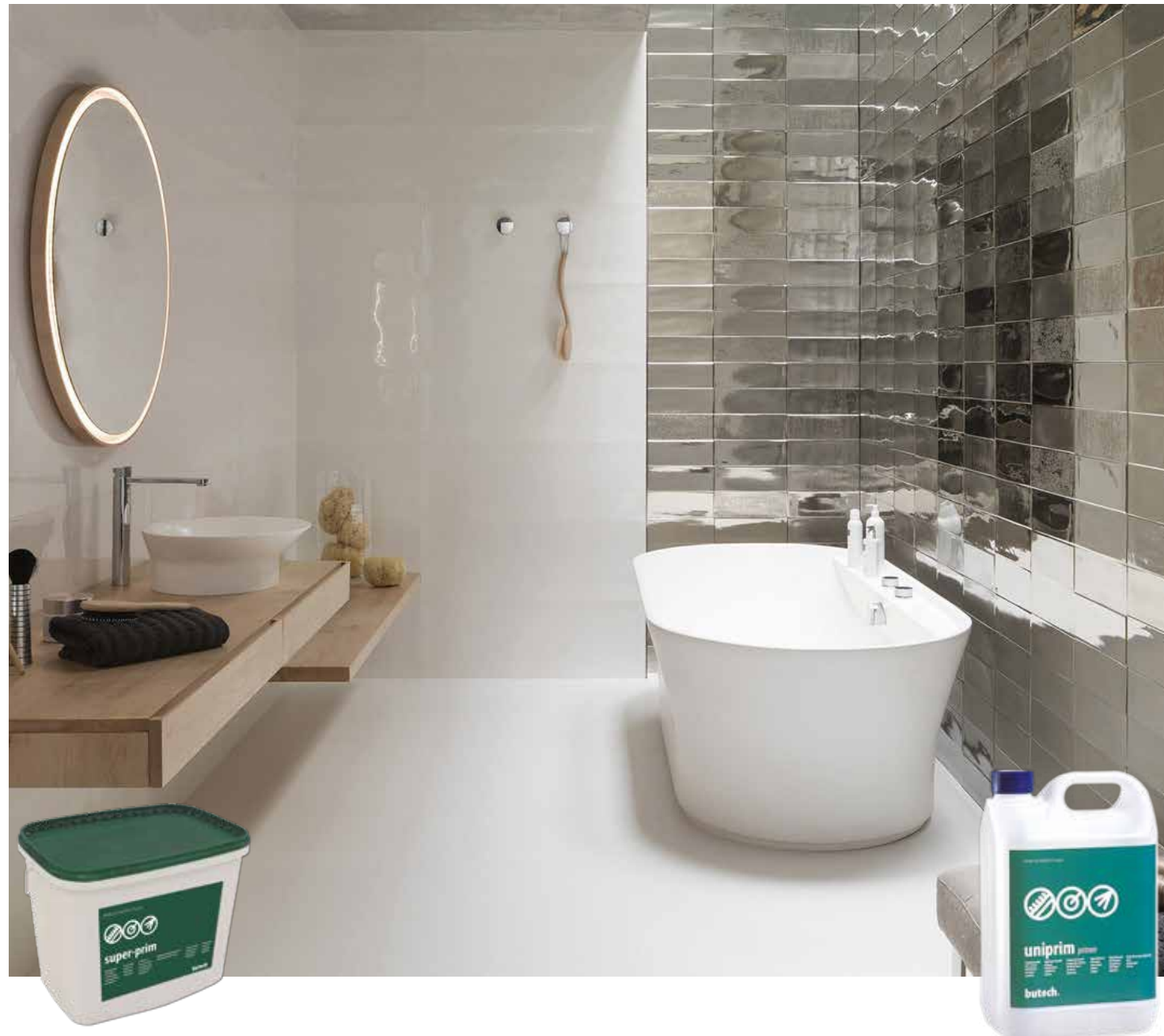
### kits\*

100213808	0,5 mm spacer system kit
100108034	1 mm spacer system kit
100109073	2 mm spacer system kit
100109074	3 mm spacer system kit
100275157	5 mm spacer system kit

\*kit: 1 adjustment tool, 100 spacers and 100 wedges

### wedge

100108031	wedge	100 ud/bag
100108032	wedge	300 ud/bag
100095383	wedge	500 ud/bag



## super-prim

**super-prim** is a water-based acrylic resin primer with silica arids, used for preparing substrates prior to using adhesives, self-leveling mortars and mortar screeds. It reduces water absorption and improves the consistency of cement-based substrates. Professional use.

### Recommended uses:

Primer for self-leveling mortars on highly absorbent or existing ceramic tile coverings.  
Ceramic tiles on cement-based substrates with weak consistency or existing ceramic tile coverings.

super-prim      100123220      can 10 kg

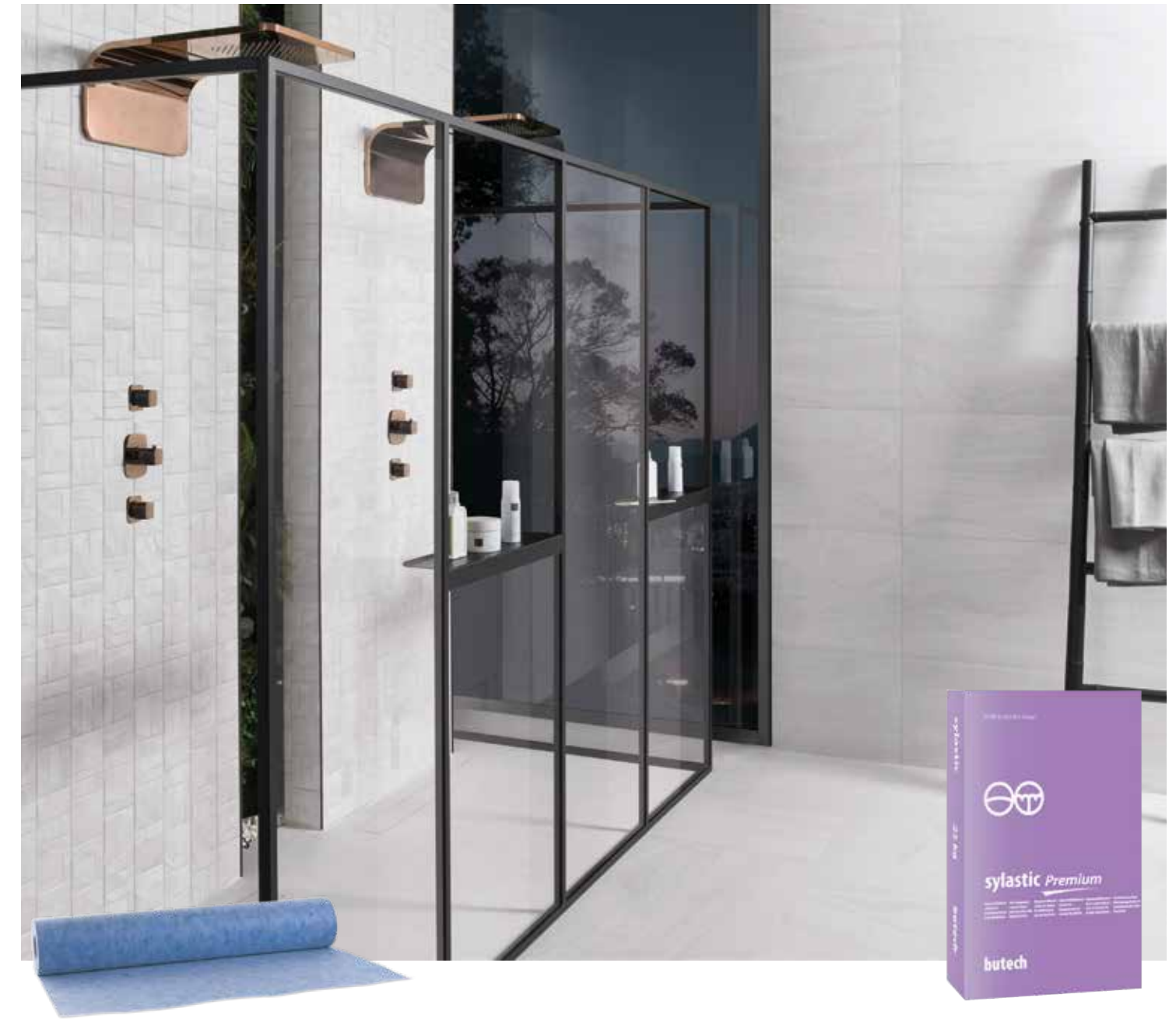
## uniprim

**uniprim** is a water-based primer made of synthetic resins for the insulation of plaster, anhydrite and molding plaster substrates, prior to the use of cement-based adhesives. It reduces water absorption and improves the consistency of cement-based substrates.

### Recommended uses:

Wall tiles on plaster or molding plaster substrates.  
Floor tiles on anhydrite substrates.  
Ceramic tiles on cement-based substrates with weak consistency.

uniprim      100004384      can 5 kg  
uniprim      100004387      can 20 kg



## imperband

**imperband** is a waterproof sheet, specially designed for indoor waterproofing of ceramic wall and floor coverings.

### Recommended uses:

Private bathrooms. Built in showers.  
Public toilets and showers.  
Spas and premises in permanently damp environments.

imperband      100276193      roll 30 m<sup>2</sup>  
imperband      100276212      roll 5 m<sup>2</sup>

## sylastic Premium

**sylastic Premium** is a single-component cementitious waterproofing material with excellent adhesion and deformability, both under positive and negative pressure. Compatible with type C2 cementitious adhesives according to EN 12004, it can be used to waterproof substrates prior to installing tiles. Indoor and outdoor use.

### Recommended uses:

Shower trays and cabins, bathrooms, spas and facilities in environments with permanent humidity  
Exterior terraces and balconies  
Pools and facilities in direct contact with water

Sylastic Premium      100316193      bag 15 kg



## anti-cracking mat

Decoupling sheet for floors undergoing low and medium movements.

This membrane reduces the transfer of tensions and stresses between the substrate and the flooring, protects the flooring against the appearance of cracks caused by sideways movements between the slabs forming the substrate and allows porcelain or natural stone flooring to be laid on substrates with medium and low movements. Especially recommended on floors built with timber panels.

anti-cracking mat 100227223 roll 15 m<sup>2</sup>



## imperband refurbishing kit n

The impermeband refurbishing kit n is an indoor waterproofing system consisting of an extrathin PVC gutter thermowelded to a 150 x 225 cm waterproof sheet. Specially recommended for waterproofing shower trays in refurbishing jobs. Residential use.

### Recommended uses:

Specially designed for waterproofing showers in refurbishing jobs.

imperband refurbishing kit n 100187047 kit 150 x 225 cm

## Linear grates



Glass white 100141156 93 x 596 mm



Glass black 100141153 93 x 596 mm



Ceramic framed 100148593 93 x 596 mm  
 Ceramic framed 100148595 93 x 800 mm  
 Ceramic framed 100148594 93 x 1200 mm



Black 100278946 93 x 596 mm



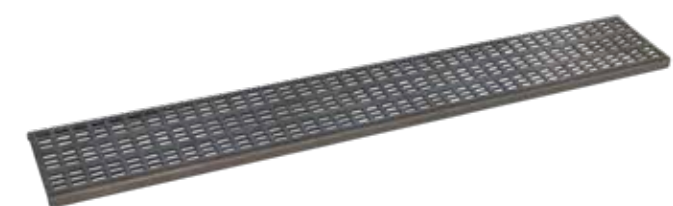
Chrome texture 100103365 93 x 596 mm  
 Chrome texture 100103366 93 x 800 mm  
 Chrome texture 100103364 93 x 1200 mm



Texture 100103368 93 x 596 mm  
 Texture 100103369 93 x 800 mm  
 Texture 100103367 93 x 1200 mm



Squared 100103371 93 x 596 mm  
 Squared 100103372 93 x 800 mm  
 Squared 100103370 93 x 1200 mm



Line 100103374 93 x 596 mm  
 Line 100103375 93 x 800 mm  
 Line 100103373 93 x 1200 mm

## butech products

### Square grates



Standard n squared 100148572



Sun 100114593



Square chrome 100293010



Square tile 100293012







## butech products

### Gold Collection

#### pro-part gold

24 carat Gold plated profile. 8 mm decorative trim.



pro-part gold 7 mm	100246452	8x7x2500 mm
pro-part gold 9 mm	100331779	8x9x2500 mm

### Texture Collection

#### pro-part coal

Brushed gold finishes profile. 8 mm decorative trim.



pro-part coal 7 mm	100278697	8x7x2500 mm
pro-part coal 9 mm	100326478	8x9x2500 mm

### Texture Collection

#### pro-part cast iron

Brushed gold finishes profile. 8 mm decorative trim.



pro-part cast iron 7 mm	100285068	8x7x2500 mm
pro-part cast iron 9 mm	100326516	8x9x2500 mm

### Metal Collection

#### pro-part rose

Brass profile with metallic covering. 8 mm decorative trim.



pro-part rose 7 mm	100232244	8x7x2500 mm
pro-part rose 9 mm	100332742	8x9x2500 mm

#### pro-part graphite

Brass profile with metallic covering. 8 mm decorative trim.



pro-part graphite 7 mm	100177049	8x7x2500 mm
pro-part graphite 9 mm	100332386	8x9x2500 mm

#### pro-part old bronze

Brass profile with matte metallic covering. 8 mm decorative trim.



pro-part old bronze 7 mm	100278752	8x7x2500 mm
pro-part old bronze 9 mm	100189092	8x11x2500 mm



# butech products

## Light Collection

### pro-light 7.5 mm

Decorative profile. Luminescent range for ceramic coverings.



<b>pro-light silver 7.5 mm</b>	100243677	21x7.5x2500 mm
<b>pro-light black 7.5 mm</b>	100243703	21x7.5x2500 mm

### pro-light silver 11 mm

Decorative profile. Luminescent range for ceramic coverings.



<b>pro-light silver 11mm</b>	100202237	27x11x2500 mm
------------------------------	-----------	---------------

### pro-mate 45 TOP light

Decorative profile. Luminescent range for ceramic coverings.



<b>pro-mate 45 TOP light</b>	100243649	22.5x22.5x2500 mm
------------------------------	-----------	-------------------

### pro-skirting LED

Decorative profile. Luminescent range for ceramic coverings.



<b>pro-skirting LED black</b>	100200414	60x1,2x2500 mm
<b>pro-skirting LED silver</b>	100200403	60x1,2x2500 mm
<b>pro-skirting LED white</b>	100200418	60x1,2x2500 mm

### pro-telo light

Decorative profile. Luminescent range for ceramic coverings.



<b>pro-telo light silver</b>	100281600	15x12x3000 mm
<b>pro-telo light black</b>	100281601	15x12x3000 mm

### pro-telo light slim

Decorative profile. Luminescent range for ceramic coverings.



<b>pro-telo light slim silver</b>	100328096	16x5.5x2500 mm
<b>pro-telo light slim black</b>	100328075	16x5.5x2500 mm

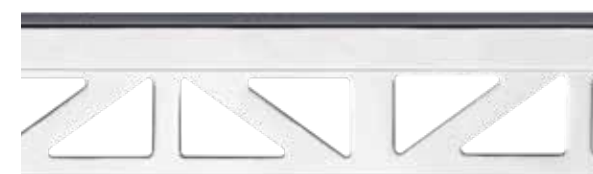


# butech products

## Chrome Collection

### pro-part chrome

Chromed brass decorative profile for wall tiles.



<b>pro-part chrome 7 mm</b>	100005368	8x7x2500 mm
<b>pro-part chrome 9 mm</b>	100005369	8x9x2500 mm
<b>pro-part chrome 11 mm</b>	100286618	8x11x3000 mm

### pro-mate 5 chrome

Chromed brass decorative profile for wall tiles.



<b>pro-mate 5 7 mm</b>	100126779	5x7x2500 mm
<b>pro-mate 5 9 mm</b>	100004945	8x9x2500 mm
<b>pro-mate 5 11 mm</b>	100286603	5x11x3000 mm

### pro-part black

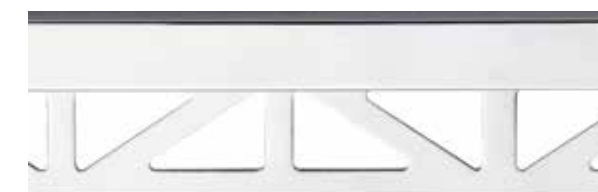
Aluminum profile



<b>pro-part black 7 mm</b>	100220100	8x7x2500 mm
<b>pro-part black 9 mm</b>	100325883	8x9x2500 mm

### pro-part Li chrome

Chromed brass decorative profile for wall tiles.



<b>pro-part Li 11 mm</b>	100070170	12x11x2500mm
--------------------------	-----------	--------------

### pro-mate 3 chrome

Chromed brass decorative profile for wall tiles.



<b>pro-mate 3 6 mm</b>	100126772	3x6x2500 mm
<b>pro-mate 3 9 mm</b>	100004952	3x9x2500 mm
<b>pro-mate 3 12.5 mm</b>	100286309	3x12,5x3000 mm

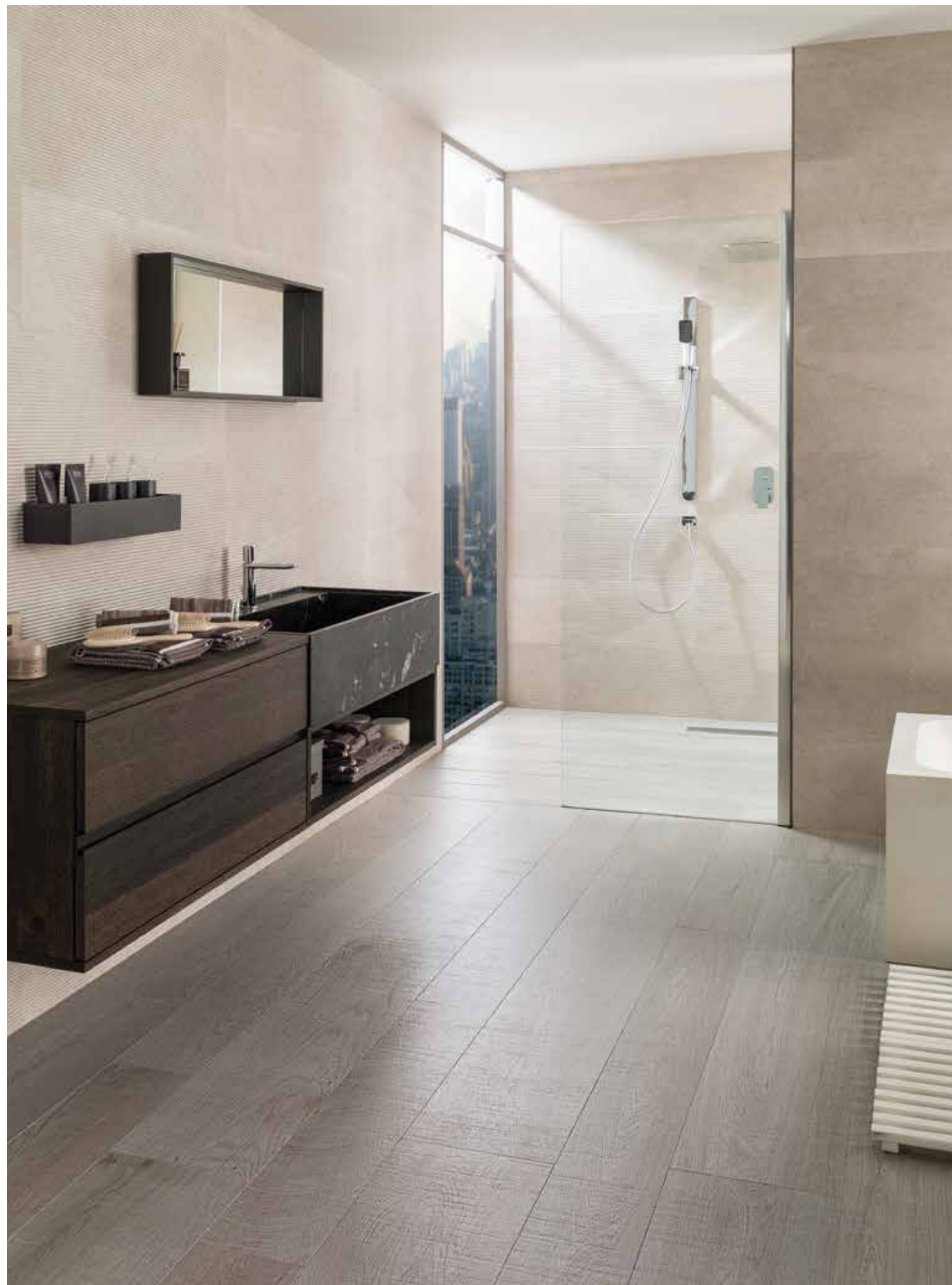
## Aluminum Collection

### pro-part white matt

Aluminum profile



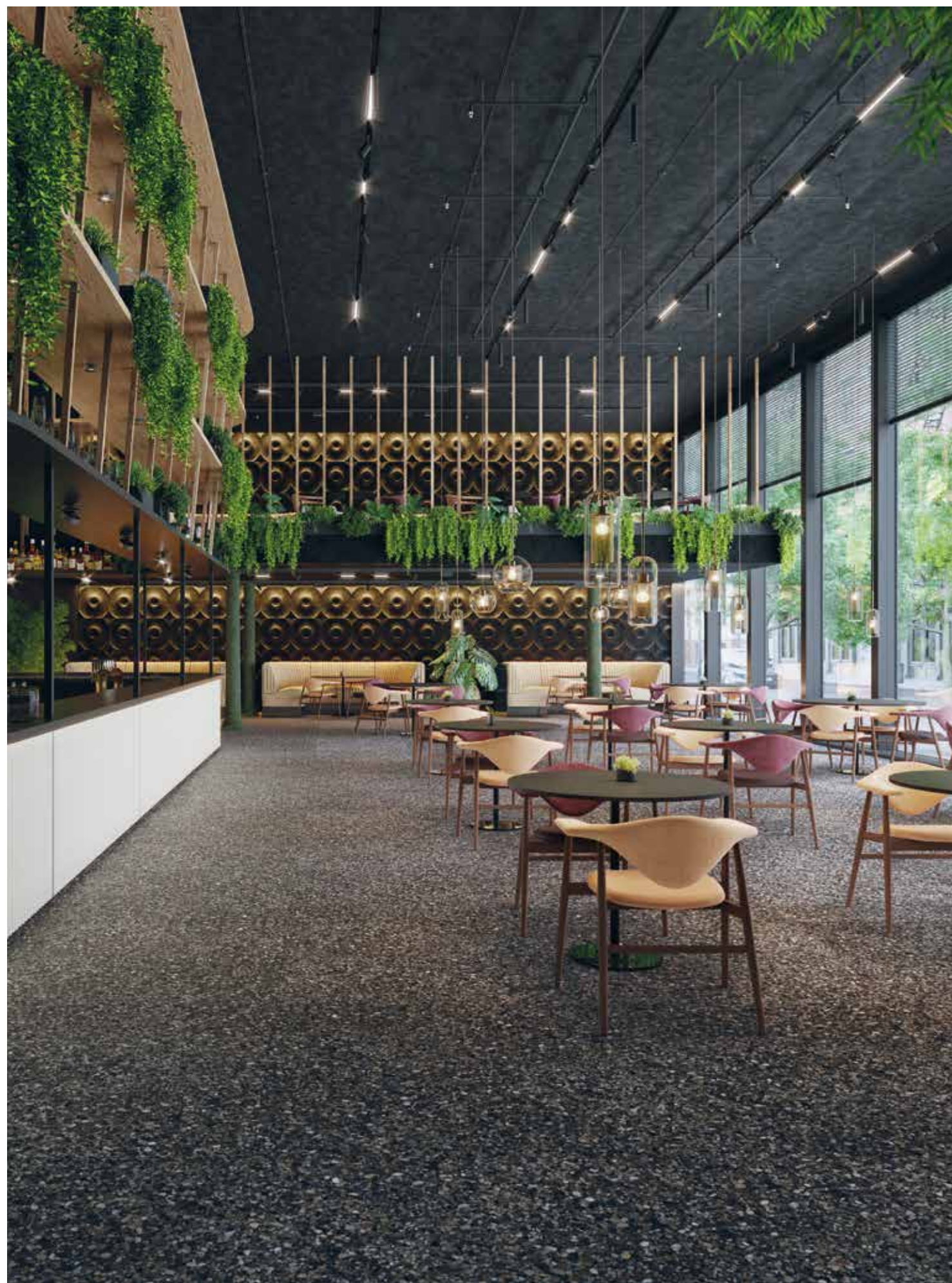
<b>pro-part white matt 9 mm</b>	100332940	8x9x2500 mm
<b>pro-part white matt 9 mm</b>	100296752	8x11x2500 mm



## butech inspiration HIGHKER

- 100216551 **Boston Topo** 59,6 x 120 cm
- 100181619 **Chelsea Silver** 29,4 x 120 cm
- 100201543 **one-flex Premium**
- 100278467 **epotech aqua manhattan**
- 100109073 **self-leveling spacers kit 2 mm**
- 100227223 **anti-cracking mat**
- 100269081 **pro-part coal 11 mm**
- 100159175 **Bathroom Taps Forma**

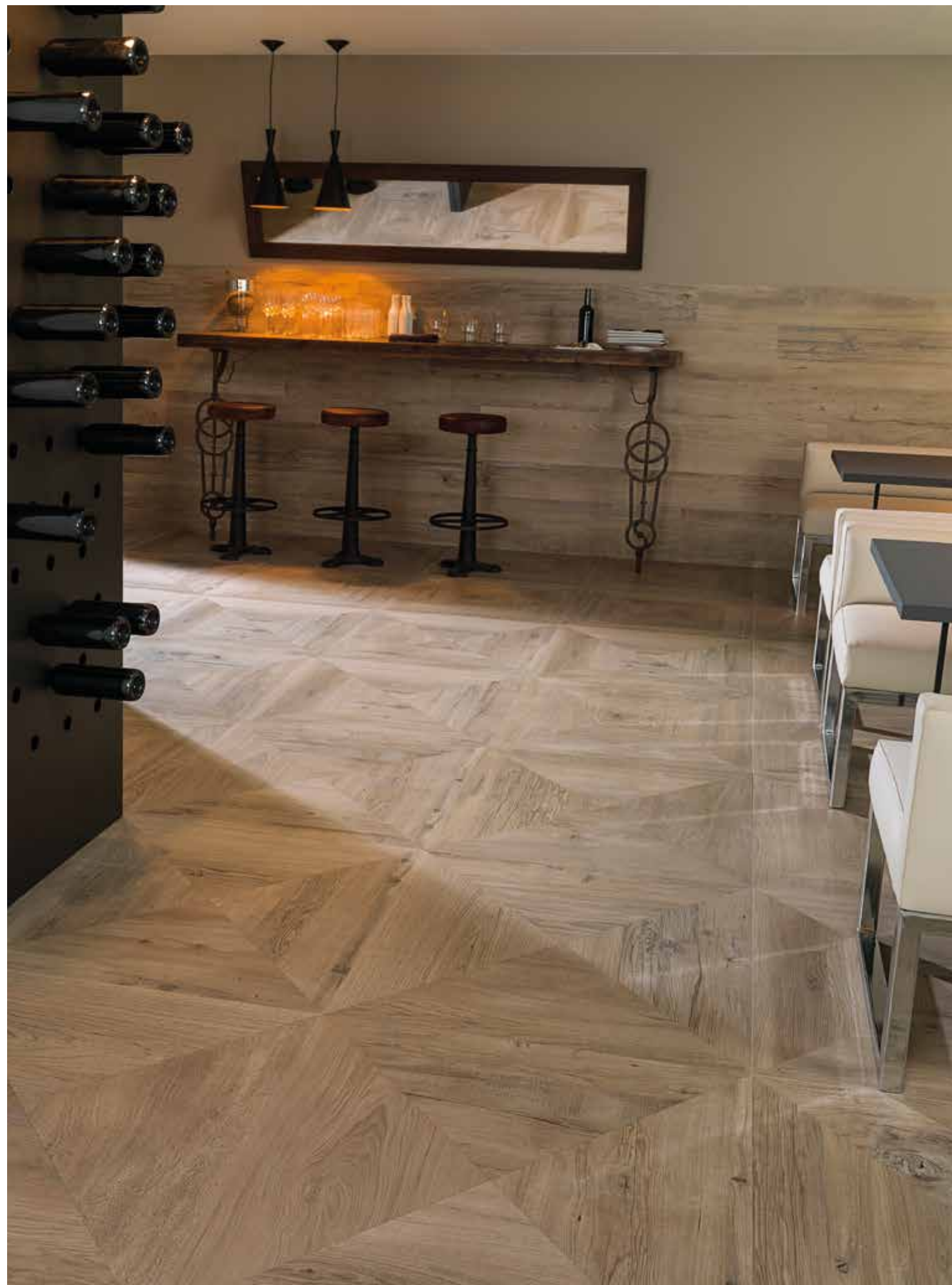




## butech inspiration HIGHKER

- 100310861 Treviso antracita L - 120 x 120 cm
- 100142757 super-flex S2 15 kg
- 100182213 epotech aqua antracita
- 100109073 self-leveling spacers kit 2 mm
- 100227223 anti-cracking mat
- 100005702 pro-dilata CFM alluminio





## butech inspiration **PAR-KER**

100310861 Manhattan Colonial 19,3 x 180 cm

100201543 one-flex Premium

100177513 epotech nautre elm

100109073 self-leveling spacers kit 2 mm

100082628 fonopac r

100005465 pro-T inox cepillado 25 mm





## butech inspiration **PAR-KER**

- 100297206 Nebraska Noir 25 x 150 mm
- 100204262 epotech nature honey
- 100238205 Glem White 150 x 300 mm
- 100236463 colorstuk rapid blanco
- 100201543 one-flex Premium gris 25 kg
- 100275157 self-leveling spacers kit 0,5 mm
- 100082628 fonopac r
- 100202237 pro-light silver 11 mm
- 100272319 monom. oxo black





## butech inspiration

### X<sup>T</sup>ONE

100240998 **Ars beige nature 150 x 300 mm**

100142757 **super-flex S2 15 kg**

100236806 **colorstuk 0-4 n gris**

100108034 **self-leveling spacers kit 1 mm**

100316193 **sylastic Premium 15 kg**

100005370 **pro-part chrome 11 mm**

100208352 **Monom. round chrome**

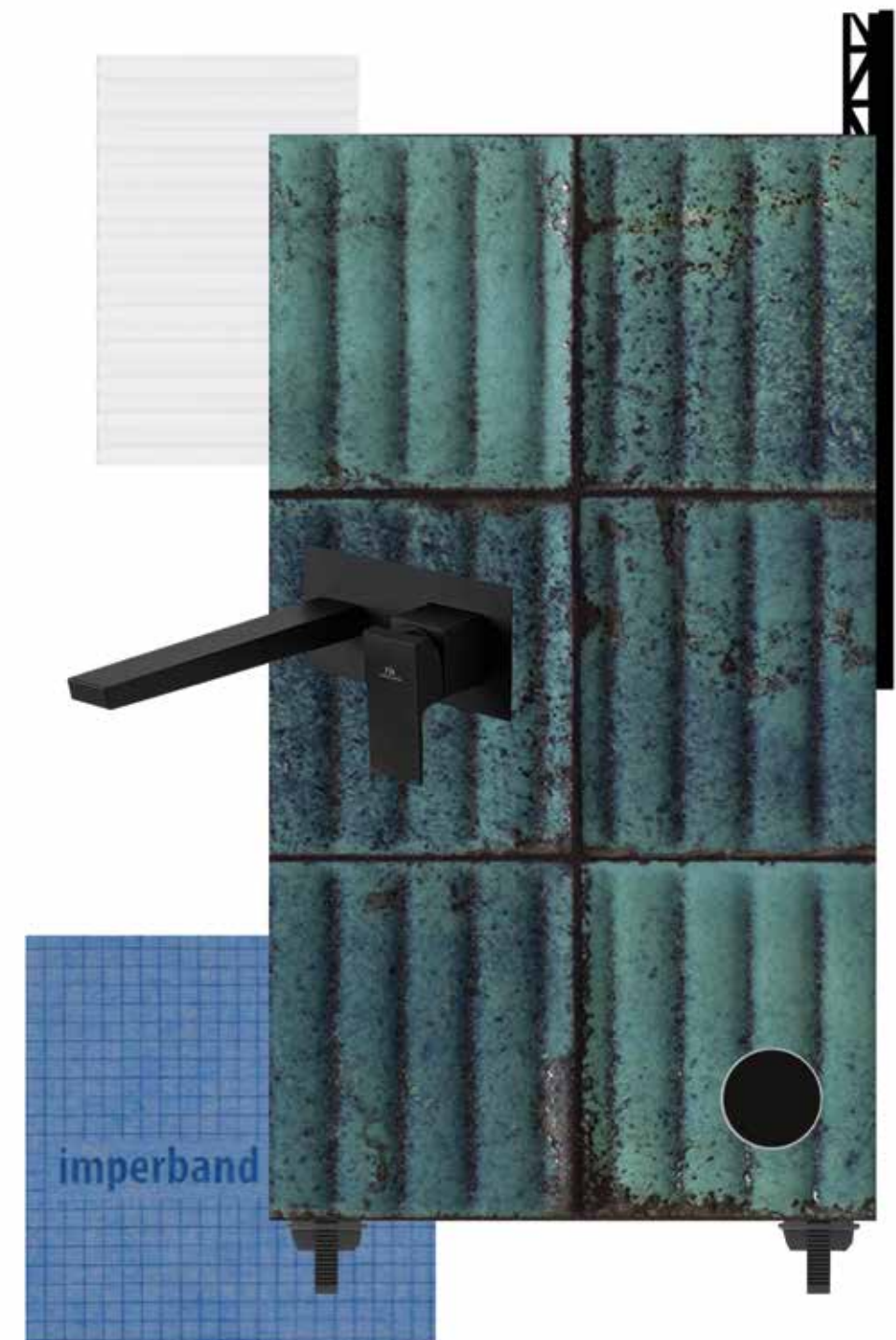






## butech inspiration wall tiles

- 100314111 Deco Vetri blu 33,3 x 59,2 cm
- 100004241 fr-one n blanco 25 kg
- 100236475 colorstuk rapid n negro
- 100108034 self-leveling spacers kit 1 mm
- 100276193 imperband 30 m.
- 100269081 pro-part coal 11 mm
- 100264004 monom. square black



## Production



## MONOBATH

### Monobath PORCELANOSA, a new concept in industrialized bathrooms

**Butech building technology** has more than 20 years of experience developing products and systems to support the use of ceramics in building industry. Now we present **Monobath**, **PORCELANOSA**'s commitment to the industrialization of bathrooms production.

**Monobath** is the solution for the production of completely finished baths ready to be installed on site, which brings together the quality of finishes and expertise that characterizes **PORCELANOSA Group**. We have a modern automated assembly line which further improves the quality of our bathrooms. Monobath is the perfect system for all types of projects such as **hotels, hospitals, residential buildings** or **care homes** although it can also be adapted to **single-family projects** where the highest quality standards are demanded.

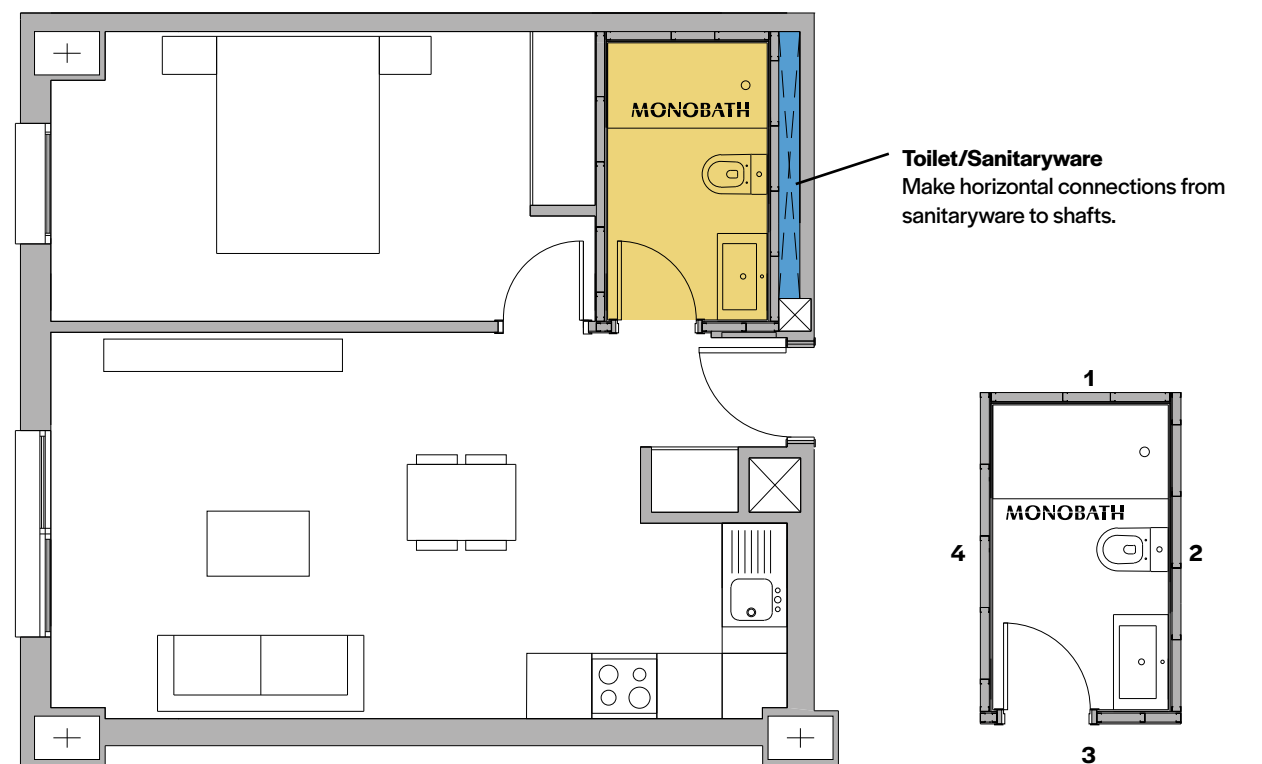
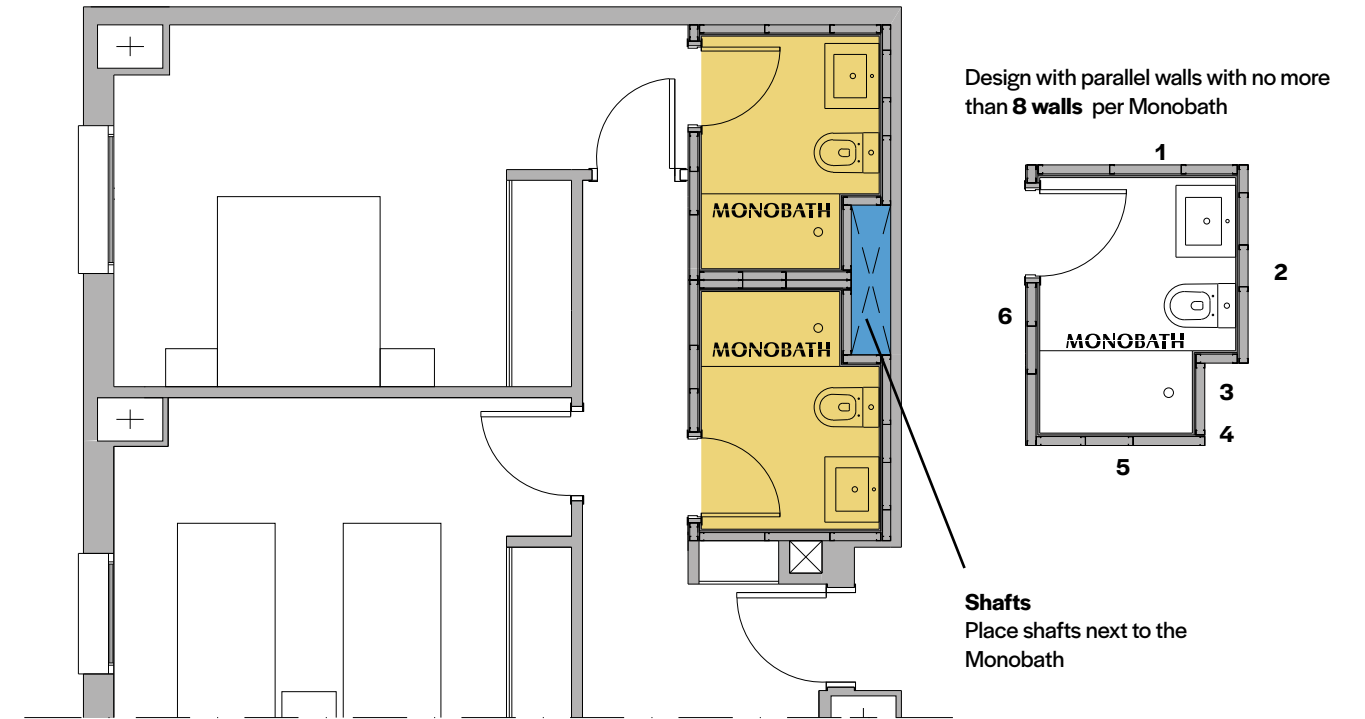
## Placing on site



## Finishings

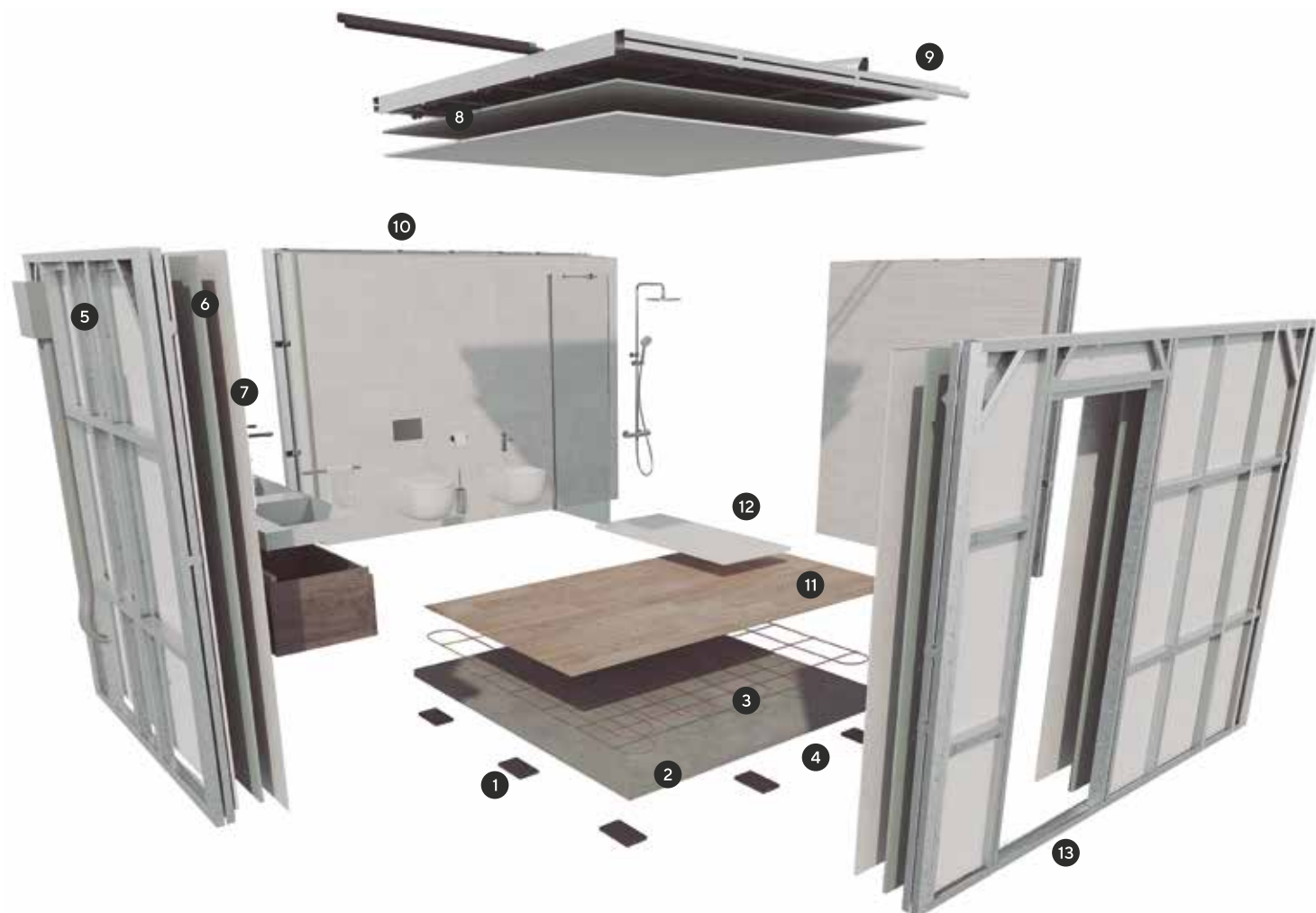


- Example of house floor plan installing monobath. Design recommendations to be taken into account:



## 1. Features for monobath design and installation

The interior finishings of every monobath will be the result of the customization process of the project, allowing you to choose from the wide range of products and finishings offered by **PORCELANOSA Grupo**.

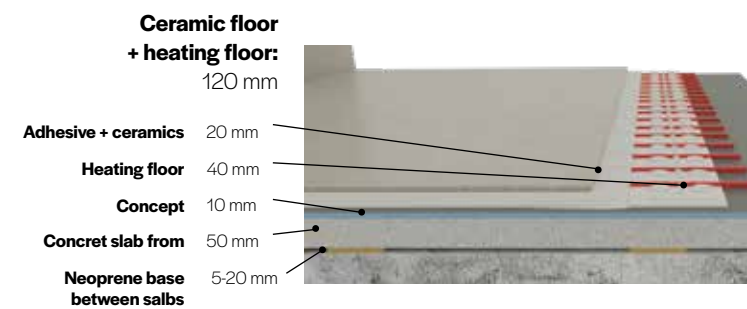
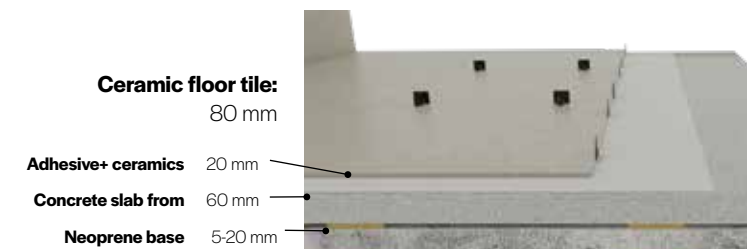


### Features for the design and installation of the Monobath

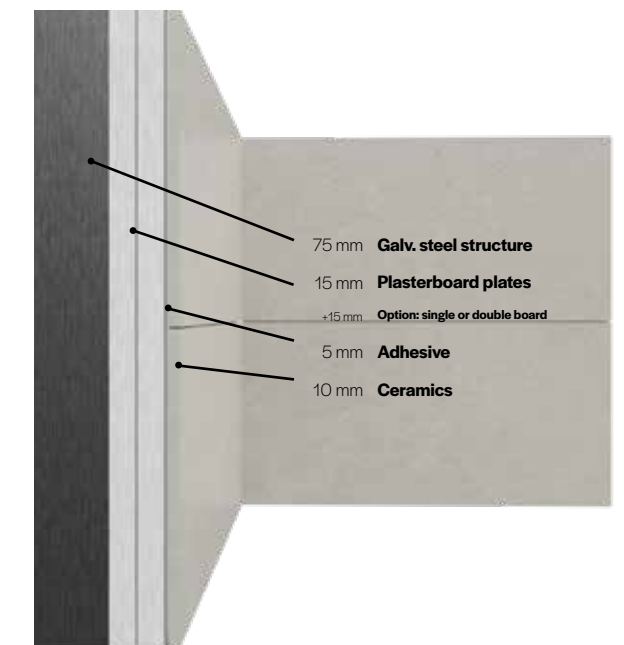
1. Neoprene bases for the Monobath's support above the slab: 2-20 mm
2. Standard base (from 80mm): 60 mm concrete base + 20mm adhesive and ceramic
3. Underfloor heating base option (from 120mm): 50mm concrete base + 50mm hydraulic underfloor heating + 20mm adhesive and ceramic
4. Slim base option (from 30mm): 12mm base + 18mm adhesive and ceramic
5. Wall and ceiling structures: 75mm steel framing
6. Boards: plasterboards / gypsum fibre / concrete board. As required
7. Interior ceramic cladding: different formats
8. Ceiling: plasterboard panel. Possibility of including registers
9. Installations: Includes lighting, electricity, plumbing and 100mm ventilation above ceiling
10. WC option: grounded, suspended with exposed cistern or embedded (120mm width)
11. Interior ceramic flooring: 20mm approximately
12. Shower tray: Above flooring or wet room shower option
13. Door: Option to include the sliding door frame

## 2. Sections

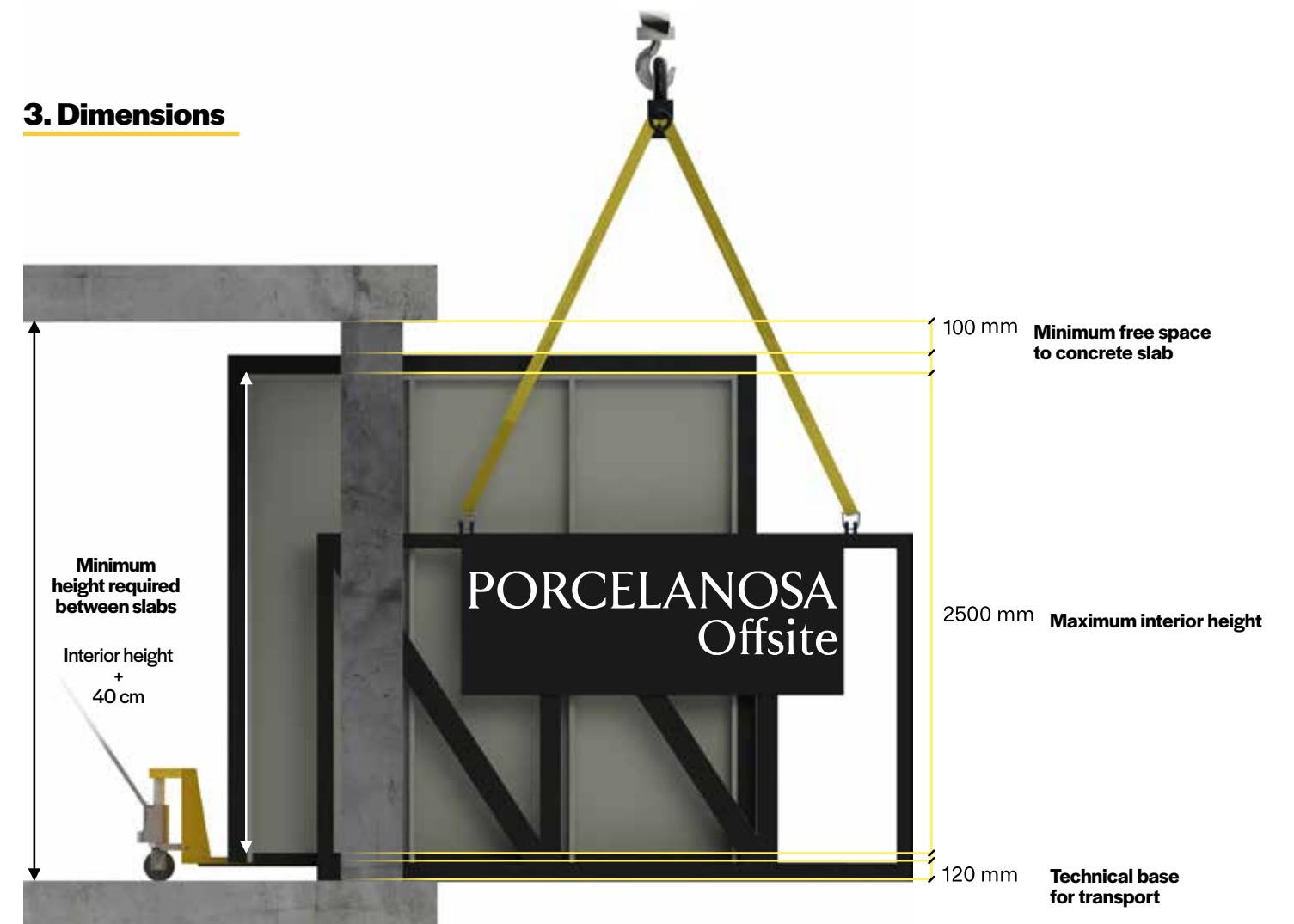
**Monobath Base:**  
80 - 120 mm



**Monobath walls:**  
Structure + Plasterboard + ceramics



## 3. Dimensions





Porcelanosa Grupo has more than 6,000 references with material of recycled origin in its composition and more than 2,000 references with transparency and environmental impact certifications

**PORCELANOSA**  
Offsite

How much are we saving?

<b>50%</b> Project management	<b>75%</b> Reviews of work	<b>75%</b> After-sales
<b>10-25%</b> Indirect costs	<b>10-25%</b> Financial costs	Waste on site Labour on site

Monobath eco reduces weight by 51.5% compared to a modular bathroom  
Reduces environmental impact by 48%

What are we improving?

<b>25%</b> After-sales	<b>75%</b> Environmental impact
---------------------------	------------------------------------



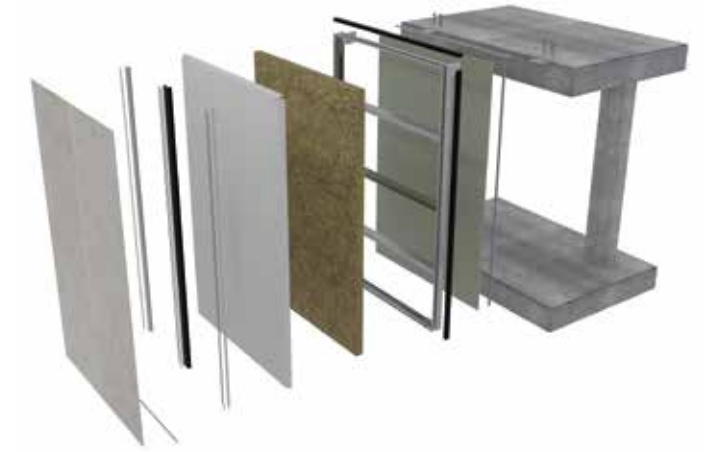
**PORCELANOSA**  
Offsite

Watford Football Stadium  
Hertfordshire, United Kingdom  
Photography Joel Knight



## MODFACADES

Innovative lightweight facade construction system, which due to the quickness of its installation and its contribution to the building's energy efficiency, make it a system that adds value to the finished product, for a price lower than traditional construction.

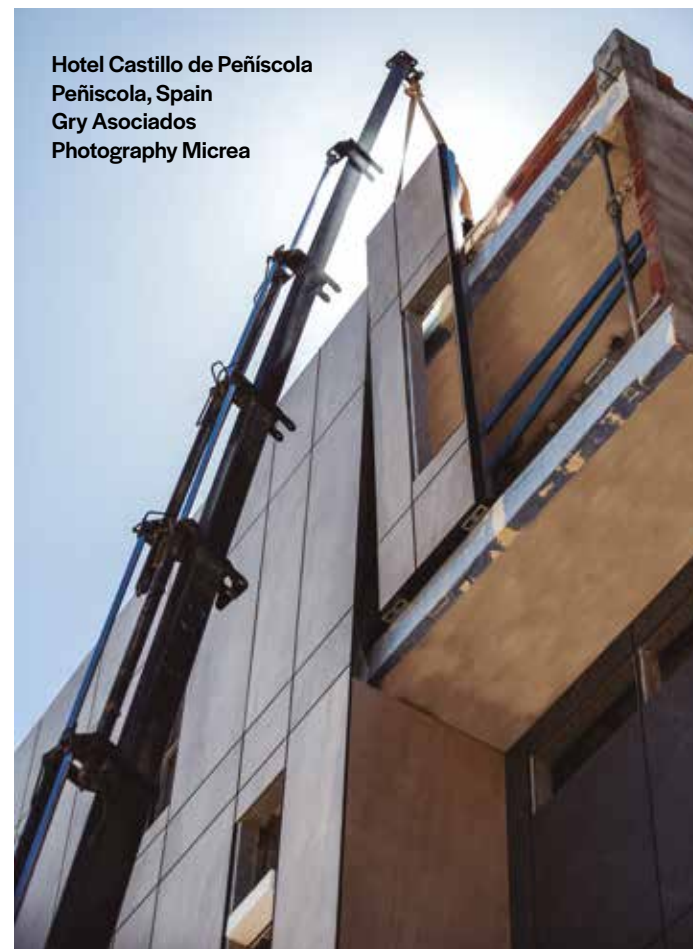


CEIP Pio XII  
Nules, Spain  
Photography Micrea

Berkshire House  
Maidenhead, United Kingdom  
Goddard Manton Architects  
Photography AA Creative



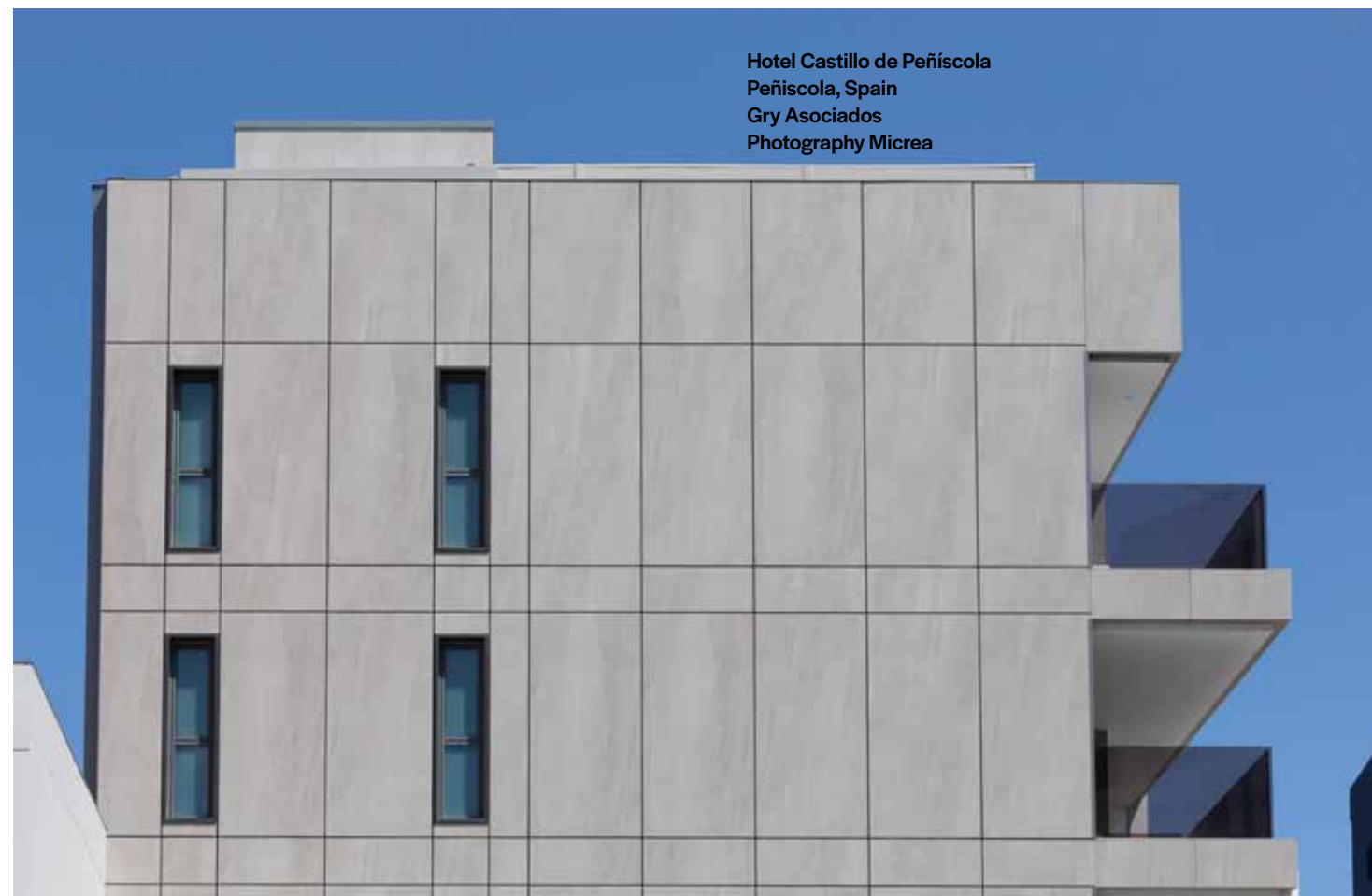
Hotel Castillo de Peñíscola  
Peñíscola, Spain  
Gry Asociados  
Photography Micrea



# MODFACADES



Hotel Castillo de Peñíscola  
Peñíscola, Spain  
Gry Asociados  
Photography Micrea



# plots and RAFx accessories

## plots adjustables (normal plot)

Type	Adjustable
Compression resistance	750 kg/unit. aprox.
Dimensions	Lower support base Ø 150 mm Upper head Ø 92 mm
Heights	Minimum 30 mm Maximum 100 mm
Slopes	From flat to 2 %



## plots adjustables (ultra plot)

Type	Adjustable
Compression resistance	1.000 kg/unit. aprox.
Dimensions	100/130: Lower support base Ø 150 mm Upper head Ø 92 mm Rest of the heights: Lower support base Ø 160 mm Upper head Ø 140 mm
Heights	Minimum 100 mm Maximum 670 mm
Slopes	De 0 a 2 %



## plots adjustables (plot n)

Type	Adjustable
Compression resistance	2.800 kg/unit. aprox.
Dimensions	Lower support base Ø 205 mm Upper head Ø 150 mm
Heights	Minimum 30 mm Maximum 670 mm
Slopes	From flat to 3 %



# plots and RAFx accessories

## plots non adjustables (basic plot)

Type	No regulable - Apilable
Compression resistance	8.000 kg/unid.
Dimensions	100 x 100 mm y 115 mm de Ø
Heights	10 mm 15 mm 20 mm



## end profile for RAFx

butech's top profile is a solution to hide the aesthetic inconvenience that occurs when a step has to be made with the Raised Floor. This profile, in addition to hiding the edge of the ceramic piece, allows us to anchor a vertical piece to the plot to hide the body of the plots\*.

Made of aluminum, and with a length of 1200mm, it can be used in thickened units (SAP: 100280081) with a 20mm depth, and in double-piece units (SAP: 100290783) with a 23mm depth. For a correct clamping of the vertical piece from its lower part, several units of the Lower Clip (SAP: 100253748) will be necessary.

\*Option valid only for plot n

end profile for RAFx

SAP	
100280081	1200 mm thickened
100290783	1200 mm double-piece units
100253748	lower clip

## vertical enclosure clip

These clips have two components: upper clip, fixed to the pedestal head, and lower clip, which goes on a previously cut pedestal base.

The perimeter panels are easily installed with these clips.

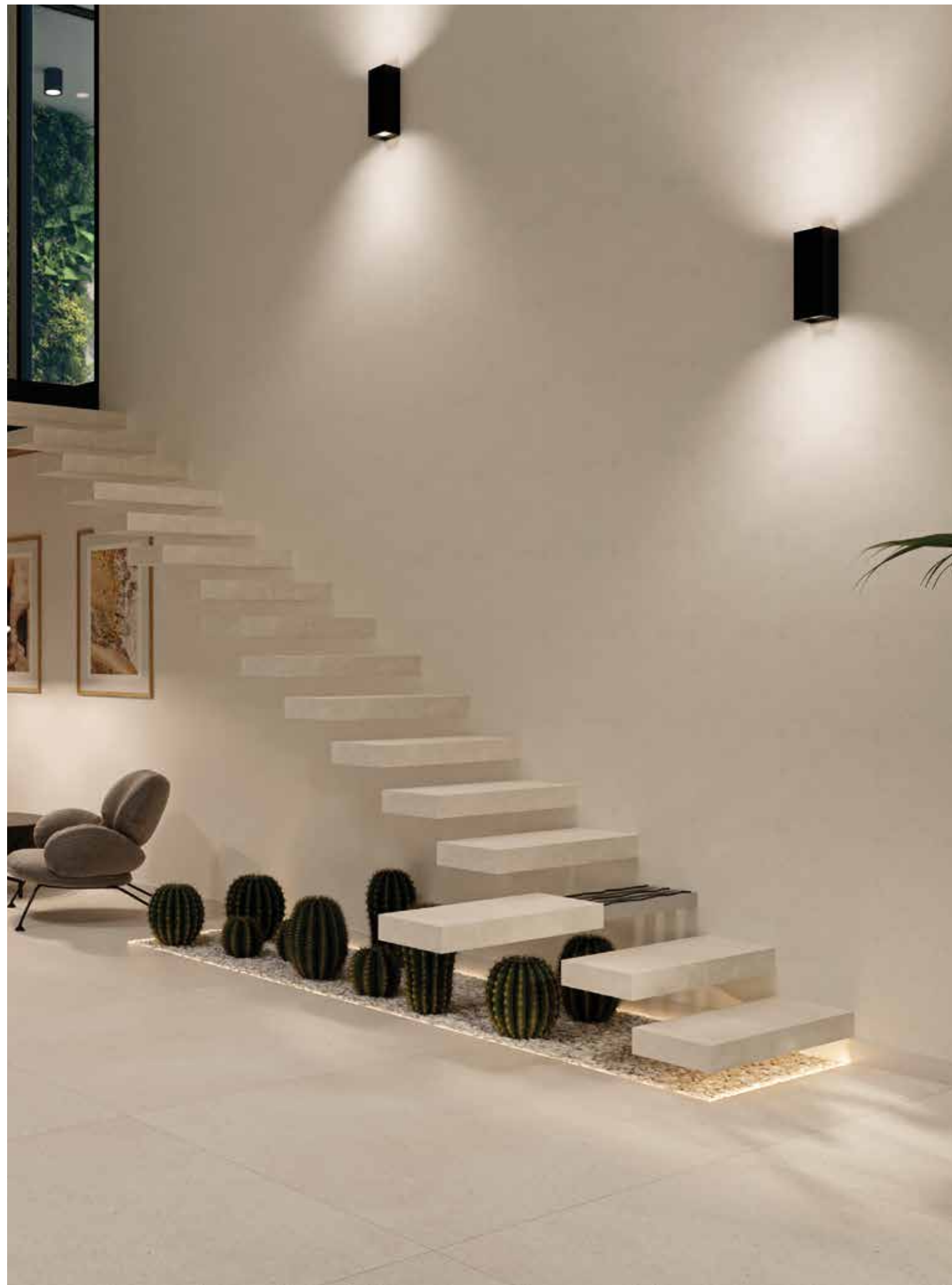
For a correct installation, the pedestal base has to be cut as shown in the images.

Only compatible with plot n

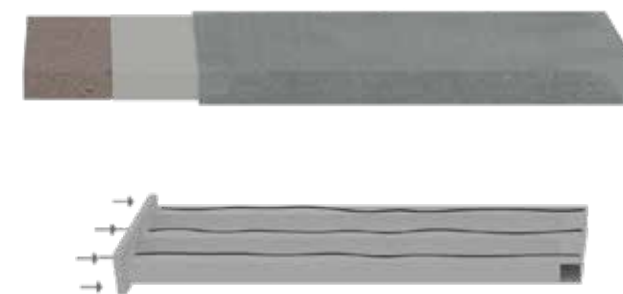
vertical enclosure clip

SAP	
100253729	vertical enclosure system
	lower clip
	upper clip





## Floating stairs



**Features**  
 Customized steps are available, but the standard measurements are:

- Length: 80 / 90 / 100 / 120 cm
- Width: Approx. 28 cm depending on tile thickness
- Thickness: Greater than 9 cm

This system is designed to be used primarily indoors, but can be adapted to outdoor projects.



# butech projects

El Pez Rojo  
Almería, Spain  
BUD Arquitectura  
Hani Fotografia



856 Washington Ave  
Brooklyn, EEUU  
Kutnicki Bernstein Architects  
Photography Imagen Subliminal



Convivium  
New York, United States  
Arquitectonica Architects  
Photography Imagen Subliminal



Unfamiliar Carlet  
Carlet, Spain  
Architect Victor Tatay  
Photography Adrián Mora Maroto

# butech projects



Oroneta  
Valencia, Spain  
RGB Arquitectos  
Photography Mayte Piera



Tangram Hotel  
New York, EEUU  
Margulies Hoelzli Architects  
Photography Imagen Subliminal



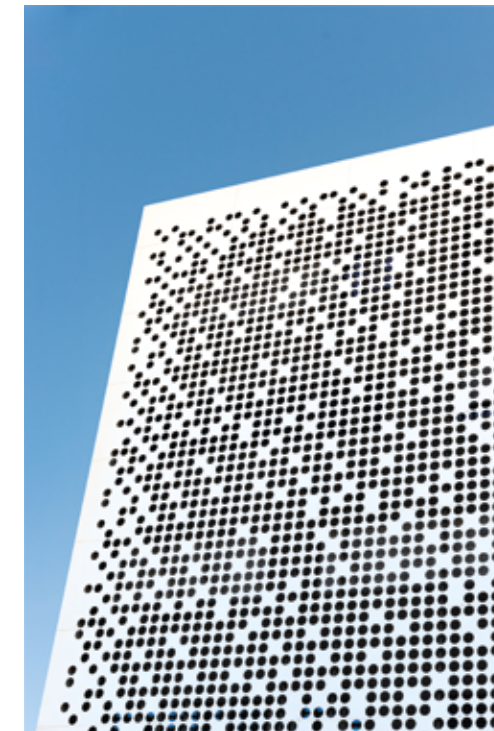
Alta Lic Towers  
Queens, EEUU  
Architects The Stephen B. Jacobs Group PC  
Photography Imagen Subliminal



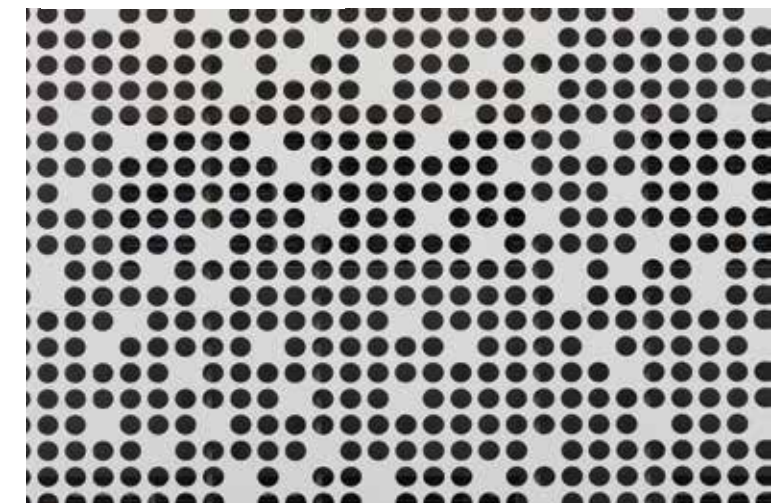
# butech projects



Waterways House  
Dublin, Ireland  
Smith + Kennedy Architects  
Photography Daragh Muldowney & Roger O' Sullivan



Montpellier University  
Montpellier, Francia  
Agence Boyer Percheron Assus Agence BPA  
Zuena Photo



# butech projects

Hotel Loft Querétaro  
Querétaro, México  
Lemus Arquitectos  
Inmobiliaria ARAT SA DE CV



Broderick One at Loudoun Gateway  
Sterling, United States  
Demian Wilbur Architects  
La Dexon Photographie



321 White Ave  
Brooklyn, EEUU  
ND Architecture and Design  
Photography Imagen Subliminal



Eagles Dare  
Andratx, Spain  
GRAS Arquitectos  
Photography José Hevia



BY APPOINTMENT TO  
H.R.H. THE PRINCE OF WALES  
MANUFACTURER AND DISTRIBUTOR  
OF CERAMIC TILES AND BUILDING PRODUCTS  
PORCELANOSA GROUP LIMITED

**PORCELANOSA** Grupo