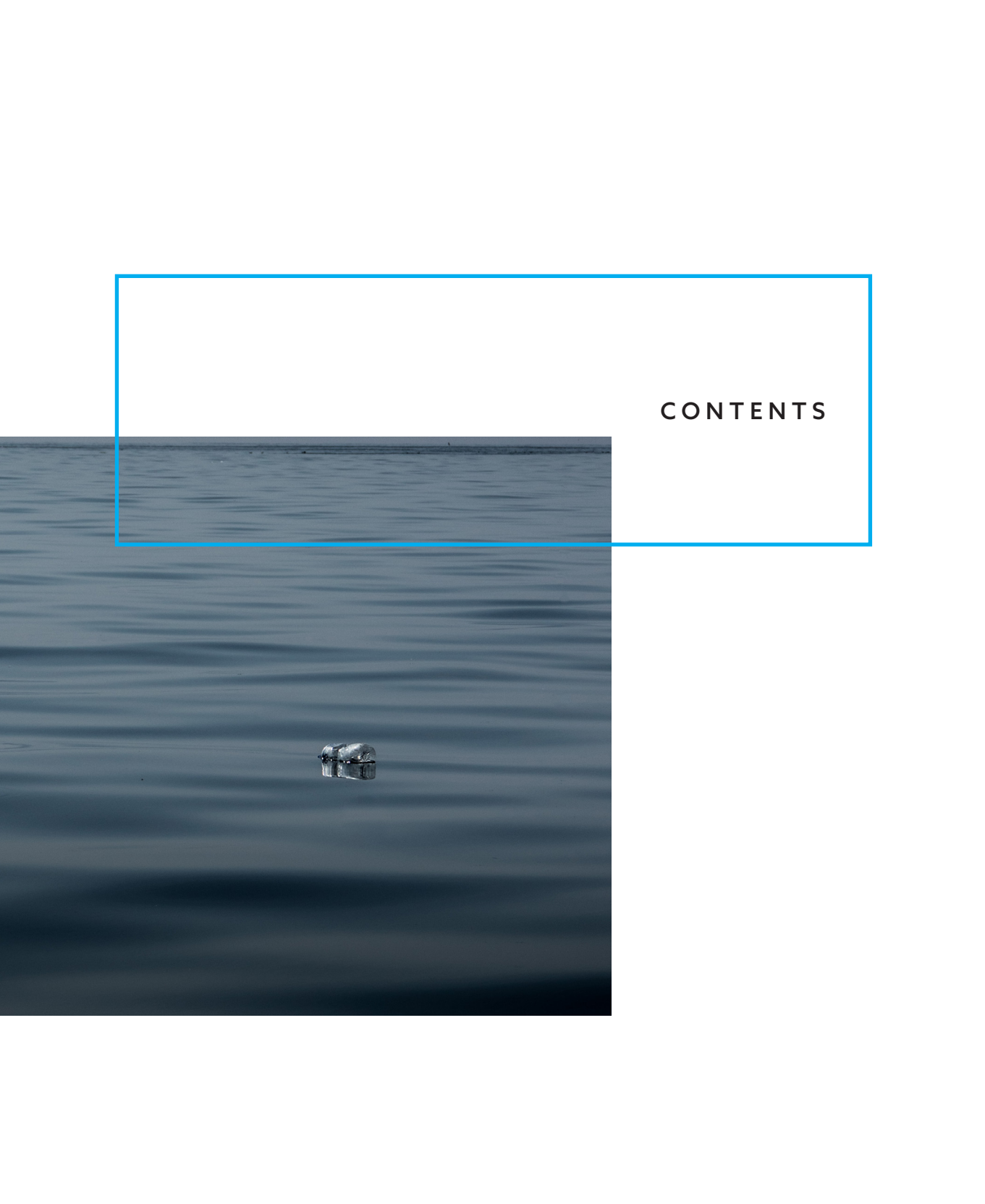


KRION SHELL®



CONTENTS



04

Introduction

06

Sustainable awareness

10

Krion Shell®

12

Productive technology

14

Variety

16

Design

20

Properties


32

Durability

34

Products made with Krion
Shell®



A photograph showing a large, sprawling pile of trash in the foreground, contrasting with a dense, green forest in the background. The trash includes various plastic bottles, bags, and other debris. A wooden structure is partially visible on the right side of the trash pile. The sky is overcast and grey.

The irresponsible use of resources is causing a great imbalance in the environment. Technology currently exists which is able to minimise the consumption of resources, giving us the opportunity to use recycled material to make new products, at the same time mitigating the effect on the environment, having unique aesthetic and functional qualities.



SUSTAINABLE AWARENESS

At Krion Porcelanosa Group we have the mission to create design products which fulfil the quality requirements required on the current market, which are also linked with values associated with sustainability. We understand sustainability as a rational system by which we minimise the consumption of resources, opting for using recycled resources and low energy consumption, offering durable, repairable products on the market. We want to be a link in the chain promoting the circular economy.





KRION SHELL®

KRION SHELL®

Krion Shell® is an Engineered Mineral Composite developed in-house by Krion. It consists of two parts: a structural inner core, made primarily of minerals (dolomite) with an eco-friendly resin binder, and a solid uniform outer surface made of mineral materials (ATH) and resins.



3/4 MINERALS

Most of the inner core of Krion Shell® is made of minerals (dolomites) found in abundance on the planet.

At least 5% waste plastic is used in its total composition



SCS Global Service, a leading North-American independent environmental certification agency, verifies and guarantees that all certified products made of Krion Shell® contain at least 5% recycled waste plastic in their composition, hence contributing to more sustainable, environmentally-friendly manufacturing processes.



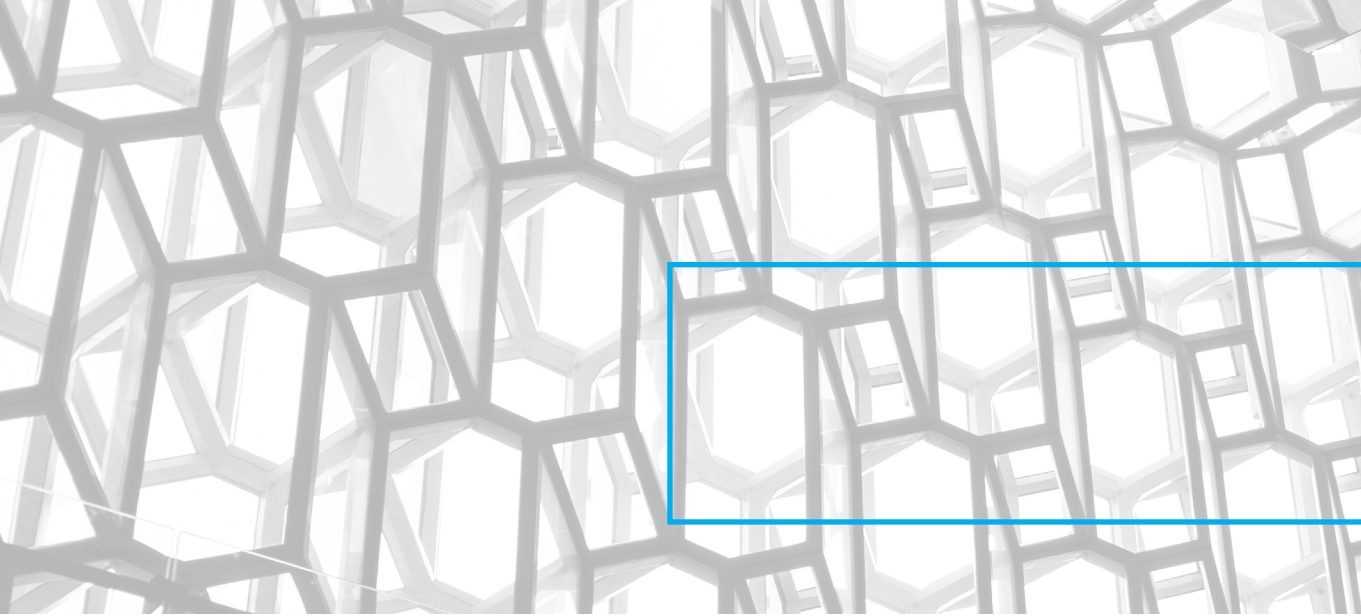
1/4 ECO-FRIENDLY RESINS

To bind the minerals, an eco-friendly resin is used, made of waste plastic. By using recycled PET plastics, waste materials are given a new life and a circular economy is promoted in the creation of Krion Shell®, minimizing the consumption of the planet's resources.

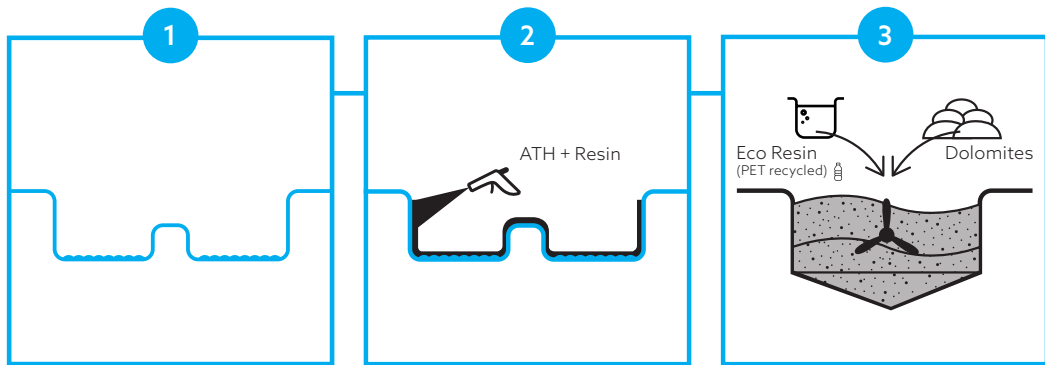


Krion Shell® is used in the manufacture of **shower trays, washbasins and bathroom worktops.**





Unlike other products on the market, Krion Shell® uses a moulding process, **Surface In-Mold Connection**, which allows a much more perfect finish and designs which are unachievable for other materials.



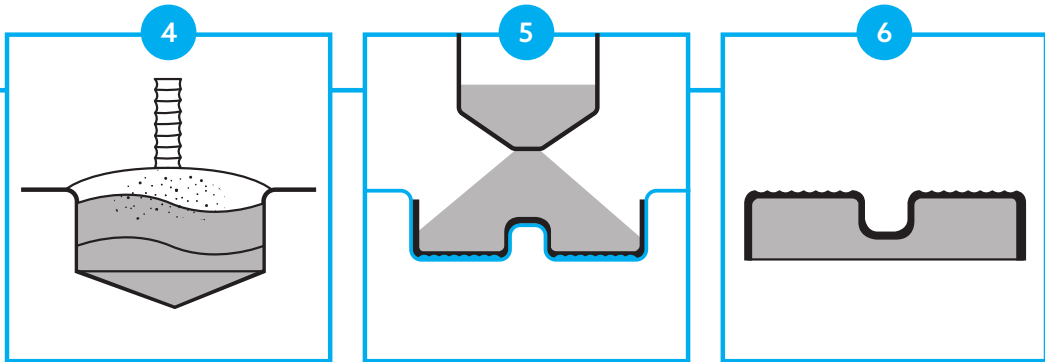
For the creation of any Krion Shell® product, an exclusive mould is used for each format. This mould will create the final finish of the product.

For the exterior (aesthetic) part of the product, a layer of material made up of ATH and high quality resins is used.

This mixture is prepared for later application to **the Surface In-Mold Connection Technology**, and is cast on the mould, creating a uniform layer for the whole surface.

For the structural body, the internal Krion Shell® section, minerals like dolomites are used, connected by an Eco Resin formed by recycled PET.

PRODUCTIVE TECHNOLOGY



The mixture is subjected to a vacuum system to remove all the air trapped in the mixing process (3). In this way, the material is better compacted.

Before the external layer hardens, casting is carried out in the same mould with the Eco Resin and the dolomites. In this way, a great union is created between them (**Surface In-Mold Connection Technology**), giving the material great resistance.

Once the material has been formed, the product is removed from the mould, and the final operations and quality control are carried out, before packaging and sending to its destination.

VARIETY



Wide variety of colours

Thanks to its production process, colours can be created without losing performance in the final finish or texture.

Colours currently available:



White



Taupe



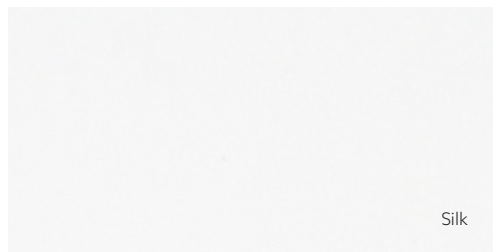
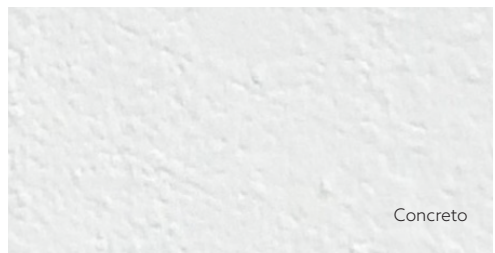
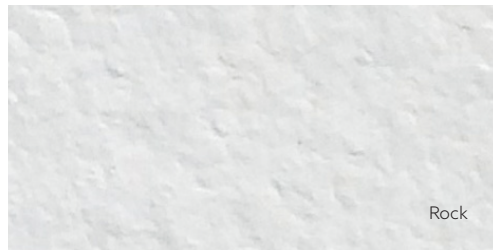
Graphite



Grey



Beige



Different finishes



Glossy



Matt

The material allows textures to be created

The final textures are created in the mould, allowing them to be reproduced faithfully to the model.

DESIGN

R2mm

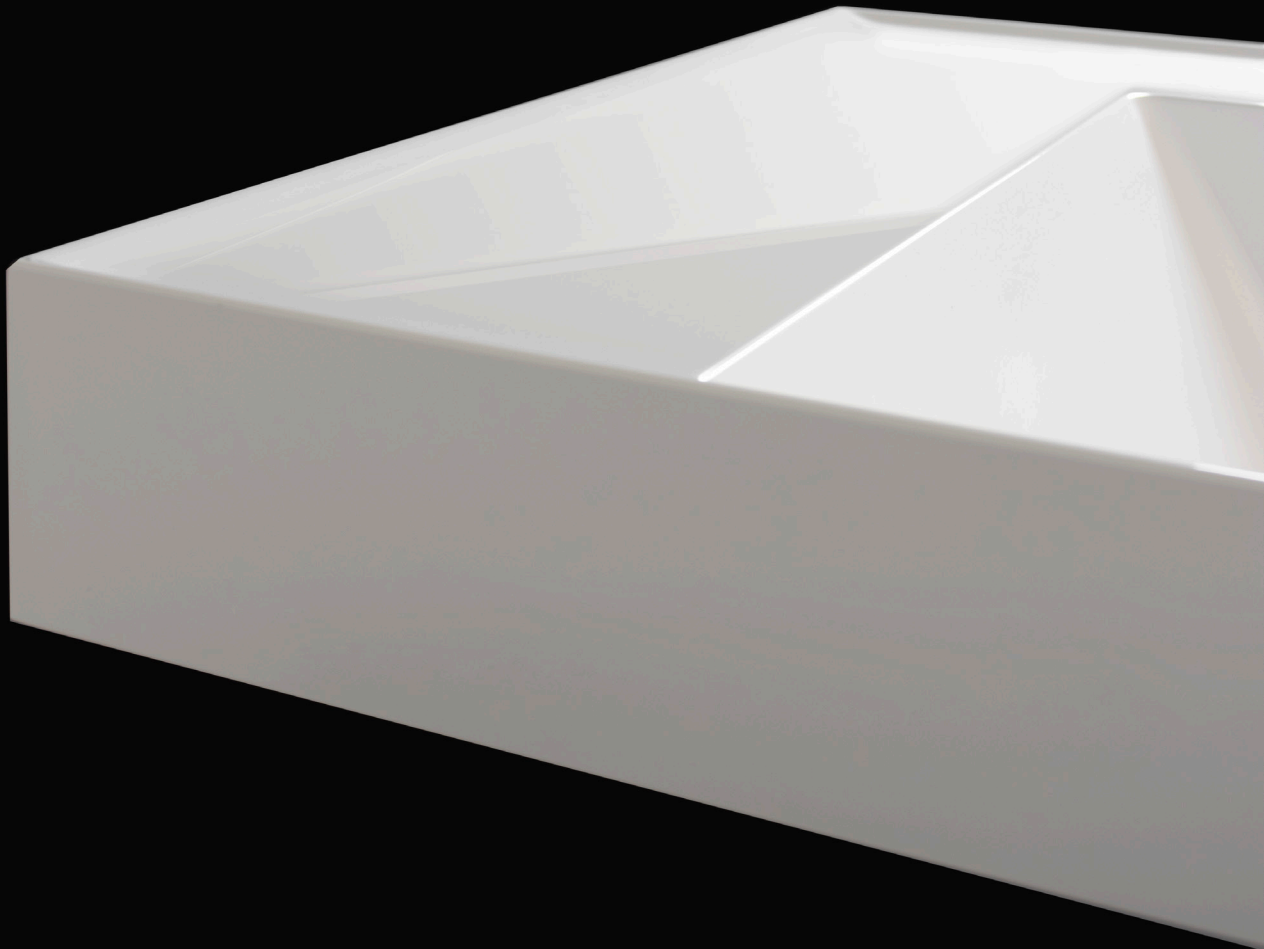


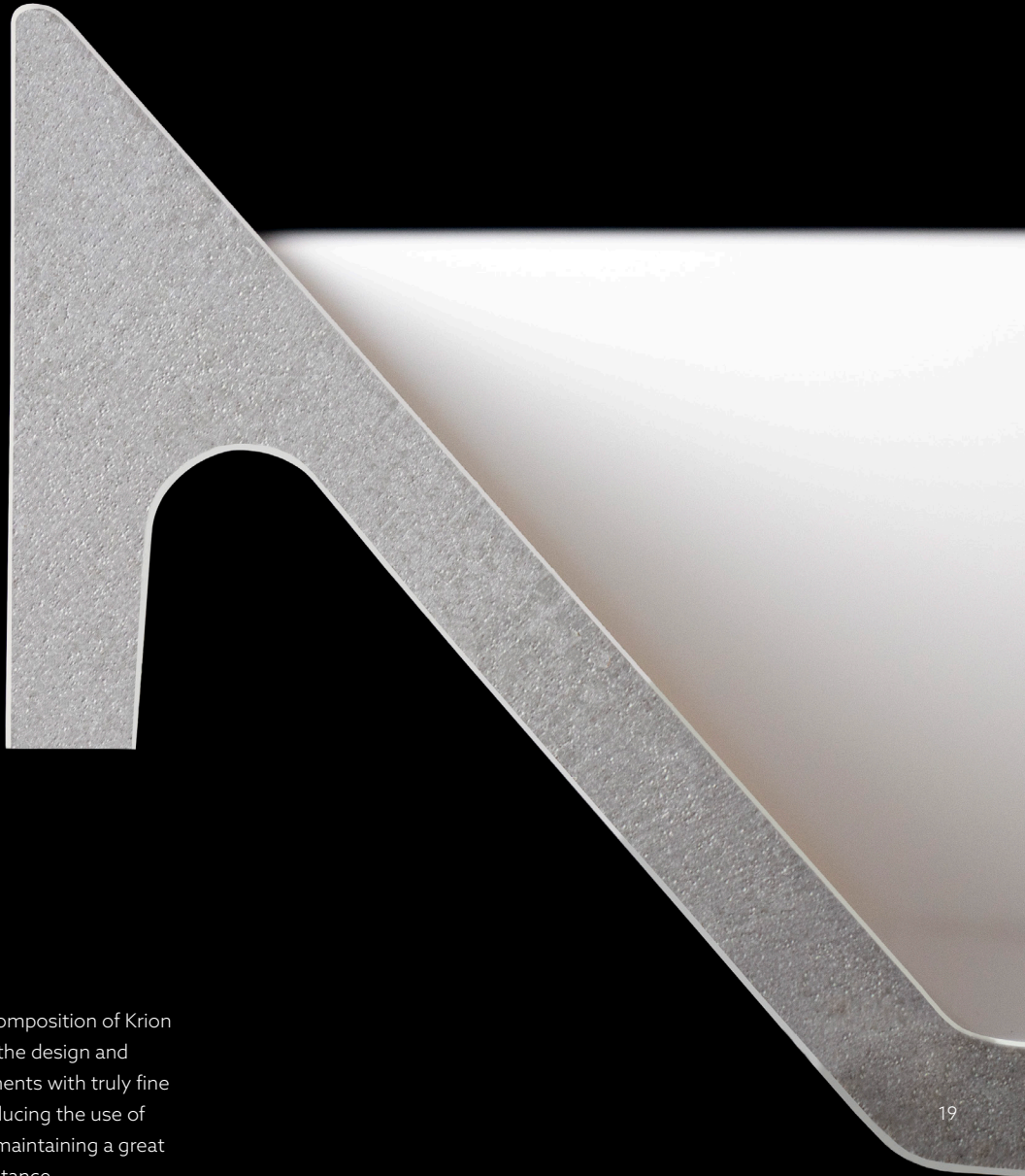
Its production process allows designs to be created which cannot be achieved in other materials, with exact, very small radiuses of up to 2mm.

Tolerances are achieved in some elements of up to 0 and +3mm, as well as great flatness, offering bathrooms a clean, pure aesthetic, with visual continuity.

0, +3mm

Krion Shell® is produced using moulds which copy it perfectly, creating surfaces which are truly flat and continuous, without alterations.





Thanks to the composition of Krión Shell®, it allows the design and creation of elements with truly fine thicknesses, reducing the use of material, while maintaining a great capacity of resistance.



PROPERTIES



Mineral Origin



Sustainable



Resistant



Resistance to staining



Easy cleaning



Safe



Adjustable



HD Textures



Repairable



Certified



Mineral origin

Any product made with Krimon Shell® is made with **75% natural mineral**, minimising the consumption of plastic in the product.



Sustainable

For Krion Shell® to have such formidable properties, the mineral is combined through **an Eco Resin largely made from recycled PET.**



For example, a Slope 150x90cm shower tray contains a quantity of recycled PET equivalent to 380 plastic bottles.



Resistant

Thanks to the **Surface In-Mold Connection technology**, this material achieves an extraordinary resistance to impact, preventing breakage due to accidentally dropping perfume bottles or shower heads.

Additionally, it has been tested under the UNE-EN 14527 and UNE-EN 14688 regulations, checking its resistance to thermal shock and sudden temperature changes.





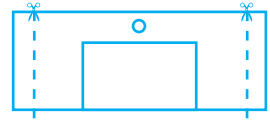
Resistance to staining

Its zero-porosity gives it excellent resistance to stains, including stains which have remained on the surface for a long time, such as commonly used daily hygiene products.



Easy cleaning

Its ease of maintenance and cleaning facilitates the daily hygiene of the material, thereby reducing the use of excessive cleaning products, and time.



Adjustable

The nature of the material allows cuts to be made to adapt the products to different spaces. Until now, the client has adapted to the product; now, the product adapts to the client.*



*Depending on model.



Safe

Thanks to the zero-porosity of the surface, the proliferation of bacteria is impeded, creating safer spaces for everyone.



HD Textures

The textures come directly from the manufacturing mould, allowing high-definition textures to be created without using a covering or subsequent treatment.

Thanks to these textures being created, higher slipperiness coefficients can be achieved.*

*Depending on texture.



Repairable

In the unlikely case of damage to the surface, irreparable in other materials, it may be easily repaired with a specific repair kit, thereby increasing its durability and therefore the sustainability of the product.





This certification granted by the Greenguard Environmental Institute guarantees that Krion Shell® complies with indoor air quality regulations with regard to Volatile Organic Compounds (VOCs).



The REACH regulation regulates chemical products which are manufactured or included as substances in mixtures and in finished products in the EU market. Its main objective is to guarantee a high level of protection of human health and the environment. KRION certifies compliance with the REACH regulation through a certification issued by an external laboratory.



The CE Marking indicates that all Krion Shell® products comply with the quality and safety criteria required by the European Union, supported by Directive 93/68/EEC and regulated by regulations applicable to each product.



The CSA label granted by CSA Group (Canadian Standards Association), indicates that the product has been independently tested and certified to comply with the quality and safety standards required in the United States and Canada, in accordance with regulations CSA B45.5/IAPMO Z124 and IAPMO/ANSI Z124.8.



The cUPC label granted by IAPMO (International Association of Plumbing and Mechanical Officials), indicates that the product has been independently tested and certified to comply with the quality and safety standards required in the United States and Canada, in accordance with regulations CSA B45.5/IAPMO Z124 and IAPMO/ANSI Z124.8.



Certified

Krion Shell® is certified as a safe product. It does not emit VOCs, or contain dangerous substances in its composition.

Krion Shell® is characterised by its great durability and its capacity to resist continuous use. It is resistance to the high transit of a hotel room, and daily use by any family.



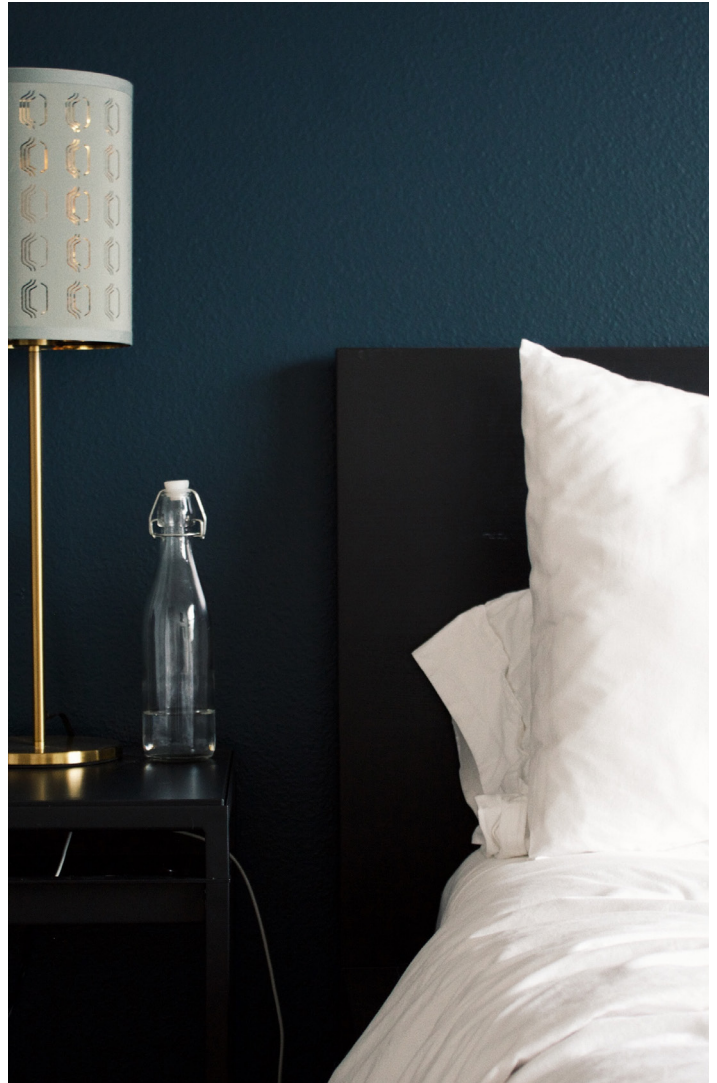
Hotel sector



Property developer



Residential sector

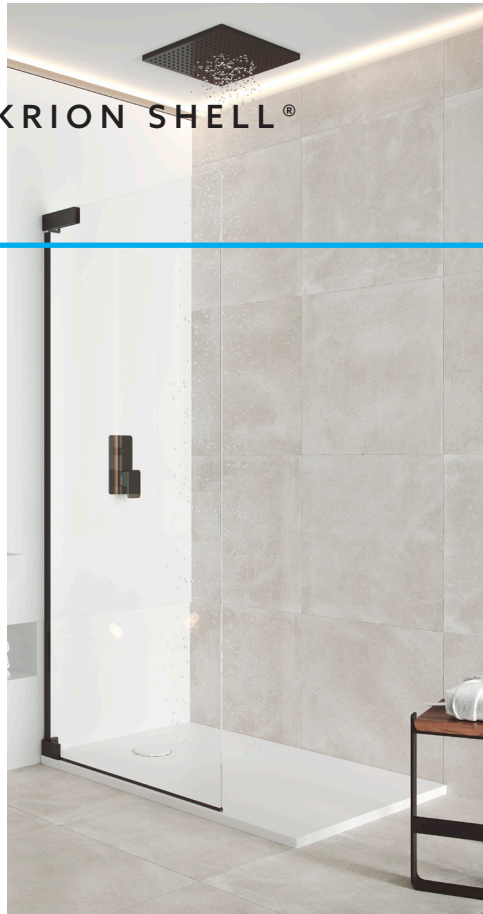




RESISTANT
REPAIRABLE

DURABILITY

PRODUCTS
MADE WITH KRION SHELL®



Shower trays



Worktops



Washbasins



Element



Ctra. Villarreal-Puebla de Arenoso (CV20) Km 1 · 12540 VILA-REAL (CASTELLÓN) SPAIN
PO/BOX. 372 - Tel: (+34) 964 50 64 64 Fax. (+34) 964 50 64 81
krion@krion.com / www.krion.com

Legal notice: The images, texts and data are the property of KRION SOLID SURFACE, S.A., with registered offices at Carretera Villarreal – Puebla de Arenosa (CV-20), 12.540 Vila-real (Castellón). The express written consent of KRION SOLID SURFACE S.A., shall be required for the partial or total use or disclosure of the said material. KRION SOLID SURFACE, S.A., holds sole rights over all forms of use of the said material and, in particular, the right to its reproduction, distribution, public communication and transformation. All the said material is protected by intellectual property laws and any undue use may result in penalties, even of a criminal kind.