

**butech**  
PORCELANOSA Grupo

Modular systems

**PORCELANOSA**  
Offsite

## **Systems, 8**

---

### **Monobath - Monokitchen, 10**

- . Design and production process, 12
- . Construction process, 14
- . On site installation, 22

### **Modfacades, 24**

- . Design and production process, 26
- . Testing, 28
- . Technical details, 30
- . On site installation, 36

## **Services, 38**

---

Engineering, 40  
Production, 42  
Quality control, 46  
Logistics, 48  
Execution, 52

## **Projects, 56**

---



# PORCELANOSA Offsite

---

At present, the construction sector is characterized by the acceleration of manufacturing processes and on site installation to reduce lead times.

In order to fulfil this objective, the priority requirement is to undertake a personalized study of the projects, with efficiency and quality control as fundamental characteristics.

In addition to this need for ever shorter lead times, there is a greater demand for quality of finishes by the end user, especially when it comes to high-end products.

This market trend affords us an excellent opportunity to expand our range of products and services.

This is how the new PORCELANOSA Offsite comprehensive construction solutions were conceived, with the PORCELANOSA Group guarantee.

# PORCELANOSA Grupo

---

The comprehensive construction solutions PORCELANOSA Offsite from PORCELANOSA Group are made up of MODFACADES, MONOBATH, MONOKITCHEN and GARDEN PODS, combining the exclusivity of the materials, the quality of the finishes and the PORCELANOSA guarantee; together with the intrinsic advantages offered by industrialized systems such as reduced lead times and improved control and traceability of the project.

A single partner with extensive experience able to combine perfectly industrialized construction and interior design since all the materials used are manufactured by companies within the Group and the installation by their skilled labour force.

This outsourcing process, in which the management of all the trades is undertaken off site offering multiple advantages, freeing up the site and project management from a significant workload, reducing execution times and ensuring a timely signing off.

PORCELANOSA

VENIS<sup>PRO</sup><sub>JECTS</sub>

**GAMADECOR**

l'ac  
PORCELANOSA Grupo

**butech**  
PORCELANOSA Grupo

noken

**X**TONE

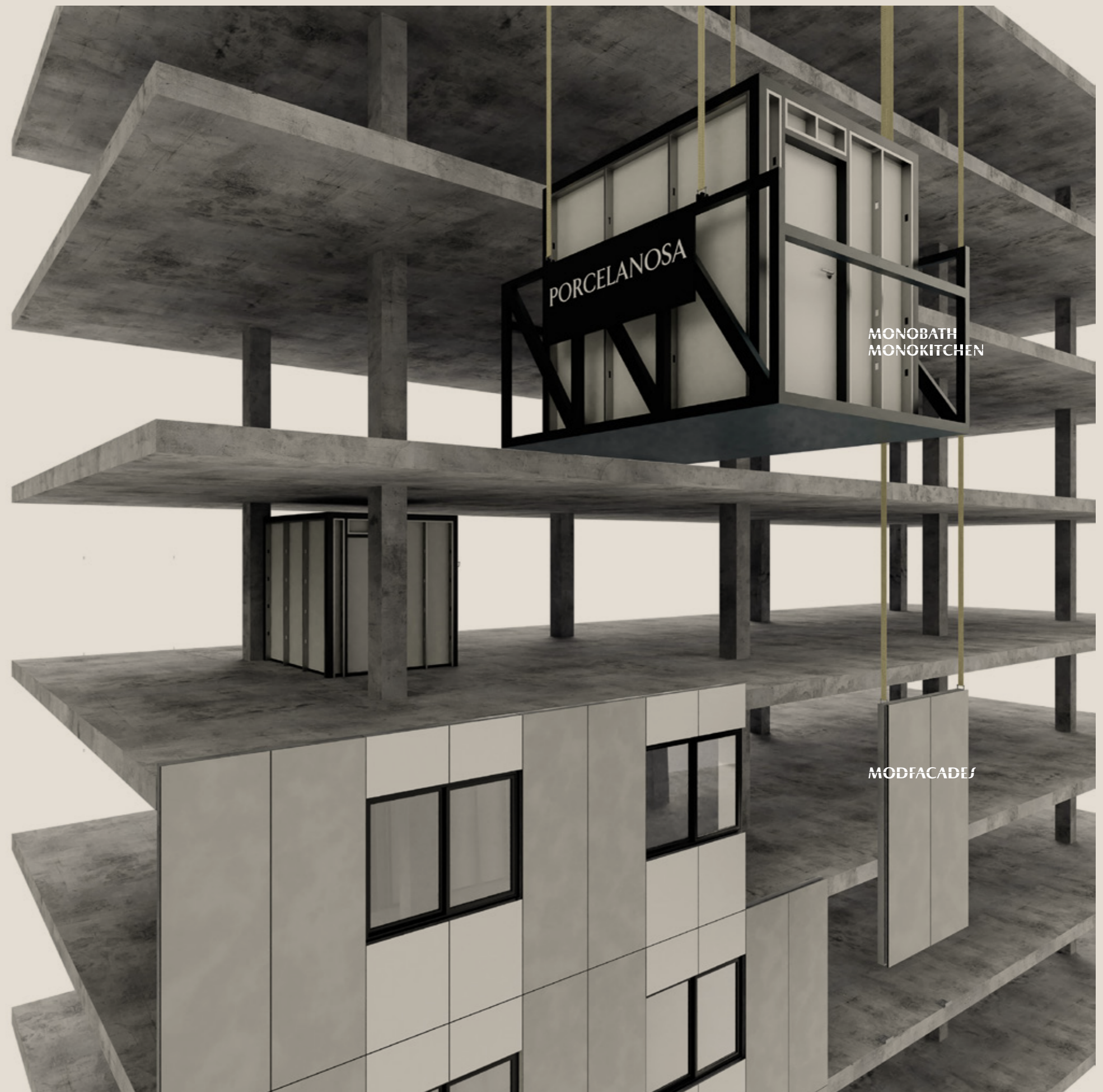
**KRICN**

# Systems

---

BUTECH, PORCELANOSA Group's subsidiary engineering company, presents PORCELANOSA Offsite, our new line of finished construction systems that are ready for installation, consisting of:

MONOBATH-Pre-assembled bathroom module.  
MONOKITCHEN-Pre-assembled kitchen module.  
MODFAÇADES-Modular façades.





## Systems

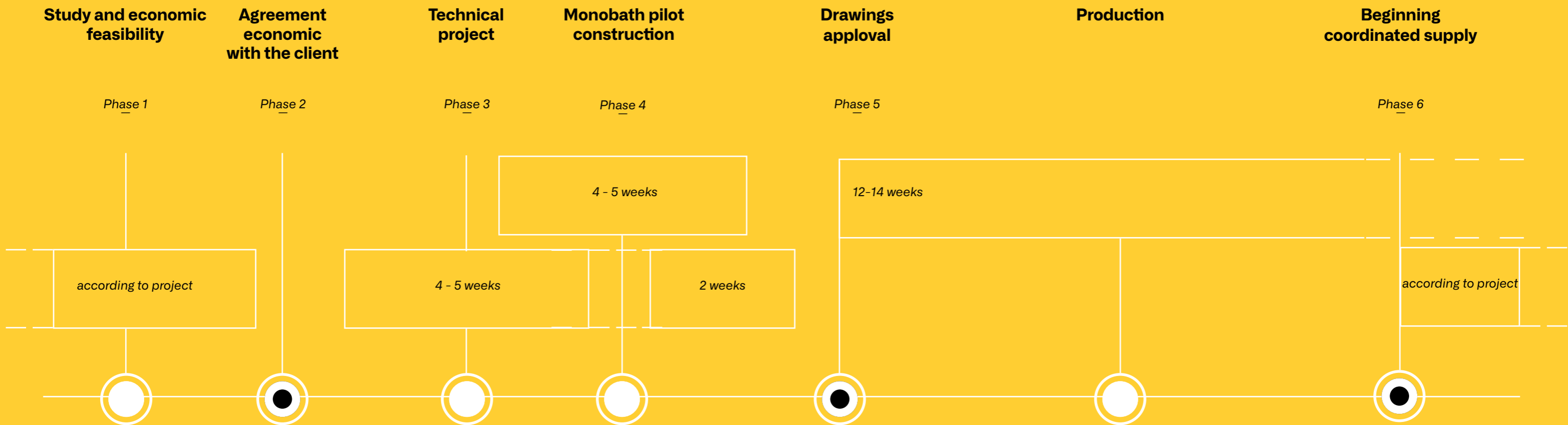
---

# MONOBATH MONOKITCHEN

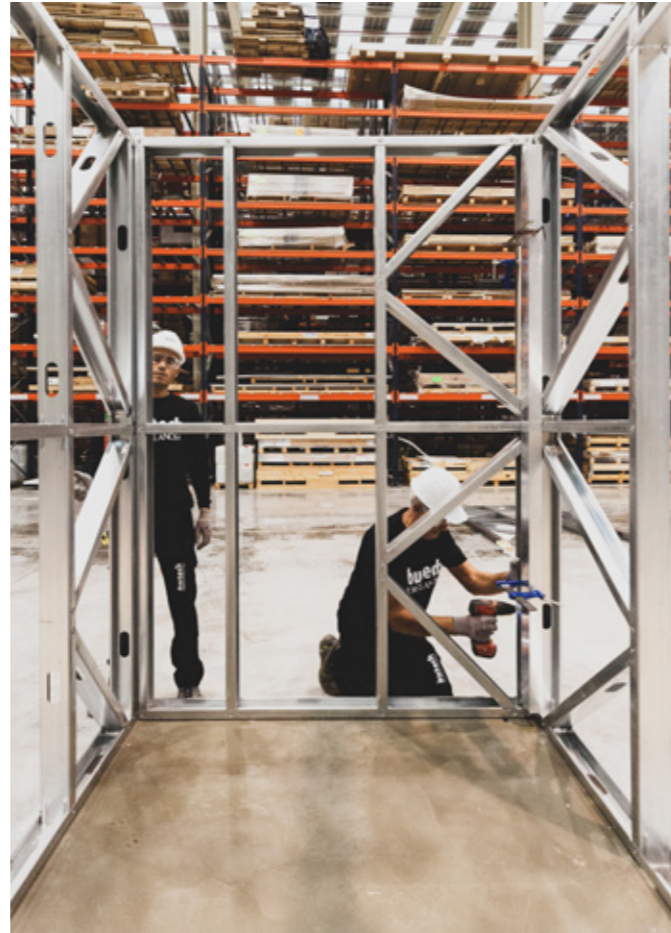
The bathroom and kitchen units include all interior finishes, furniture, sanitary ware and accessories, such as plumbing and electricity, all ready for use. A construction system that ensures quality and reduces lead times.

The system makes for quick and efficient on-site installation, the units are taken to and introduced into their final location with no more requirements than lifting equipment and a gap in the cladding/walling through which to insert the bathroom or kitchen.

# MONOBATH MONOKITCHEN



# MONOBATH MONOKITCHEN







Interior customisation.  
Construction and finishing in our factory.



On-site installation prior to placement of façade cladding/walling.

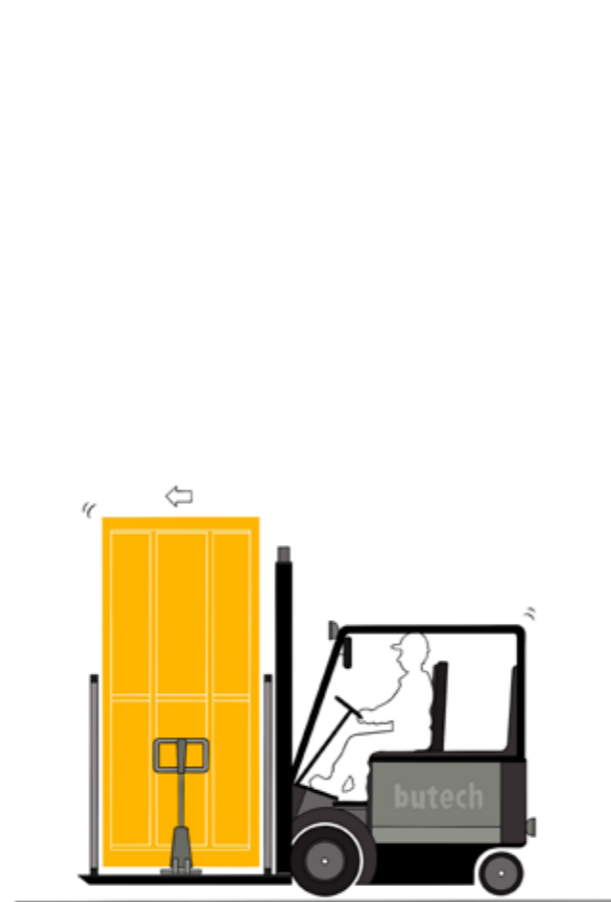
## MONOBATH MONOKITCHEN



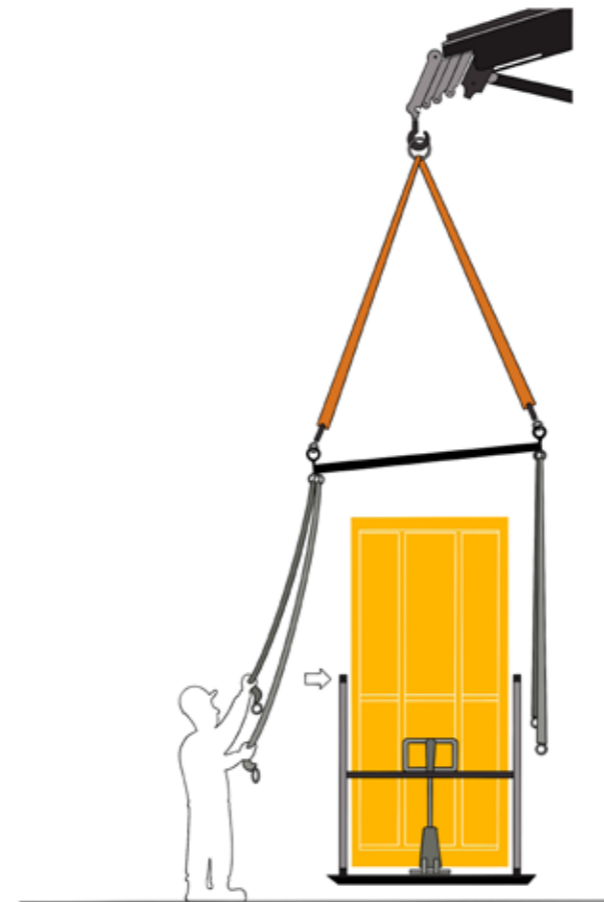
All the materials used in the MONOBATH and MONOKITCHEN modules are selected from companies in the PORCELANOSA Group. The commissioning of the units is carried out by professionals with extensive experience in the placement of ceramic products and bathroom accessories, thus ensuring their correct installation and minimise the possibility of any after-sale service requirements.

Any models produced within the PORCELANOSA Group can be used in these bathroom and kitchen units without any restrictions of the available space: from L'ANTIC COLONIAL mosaics to large format ceramic tile laminates by XTONE, in addition to other complements such as ceramic sanitaryware, faucet fittings, shower trays, mirrors and other accessories; all strictly supervised directly by technical staff at GAMADDECOR, NOKEN and KRION, PORCELANOSA Group companies specialising in these products.

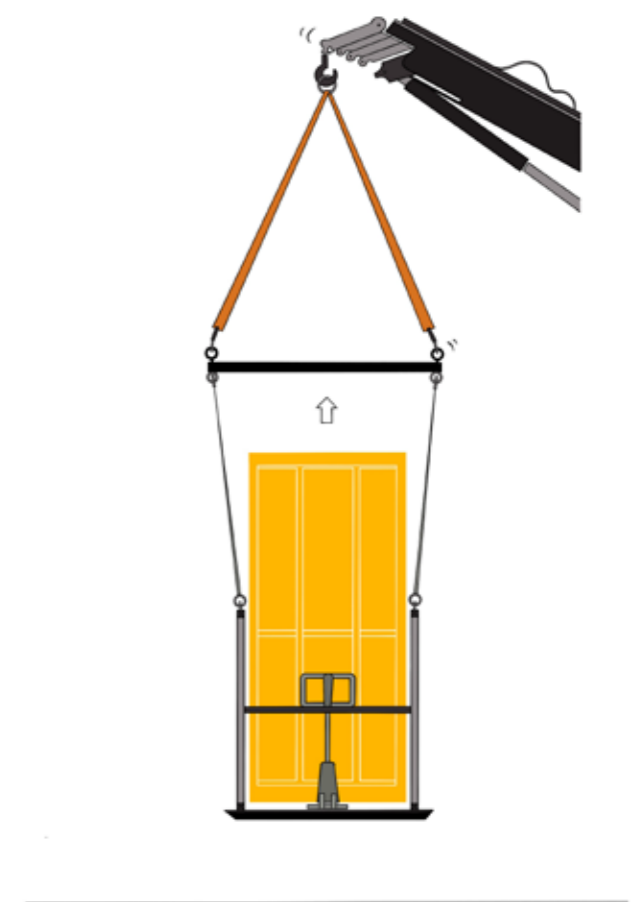
In this way, the coincidence between material supplier, manufacturer and installer becomes the best guarantee of these industrialized bathroom and kitchen units.



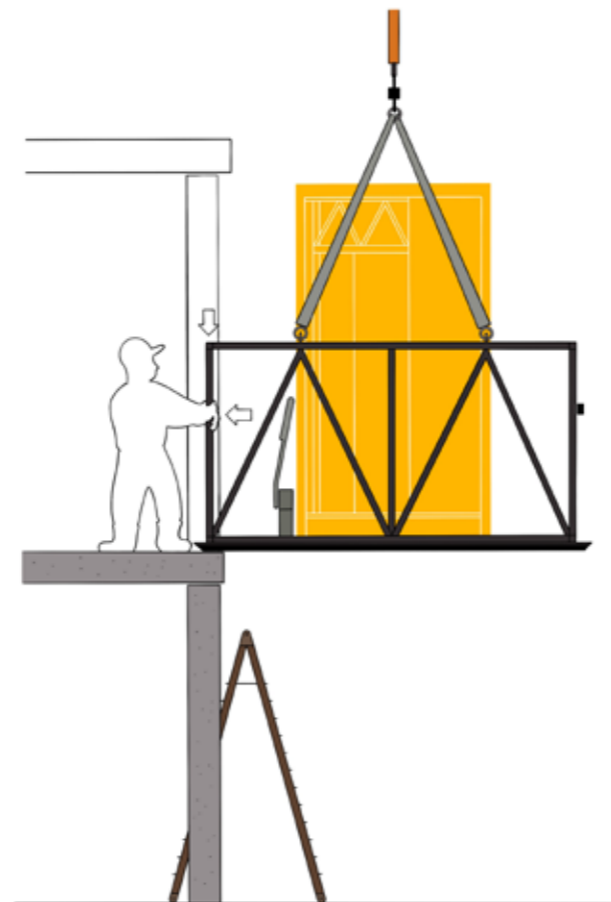
1.



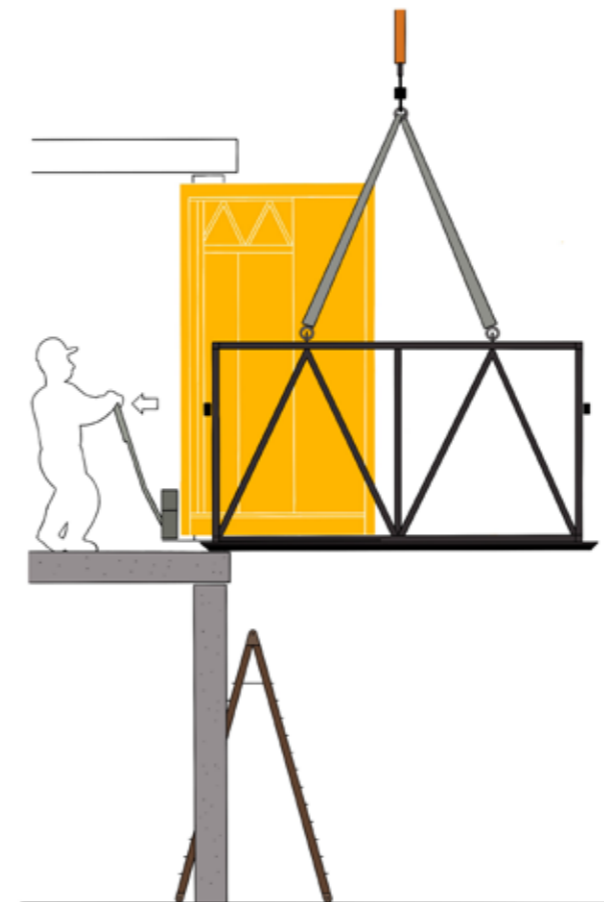
2.



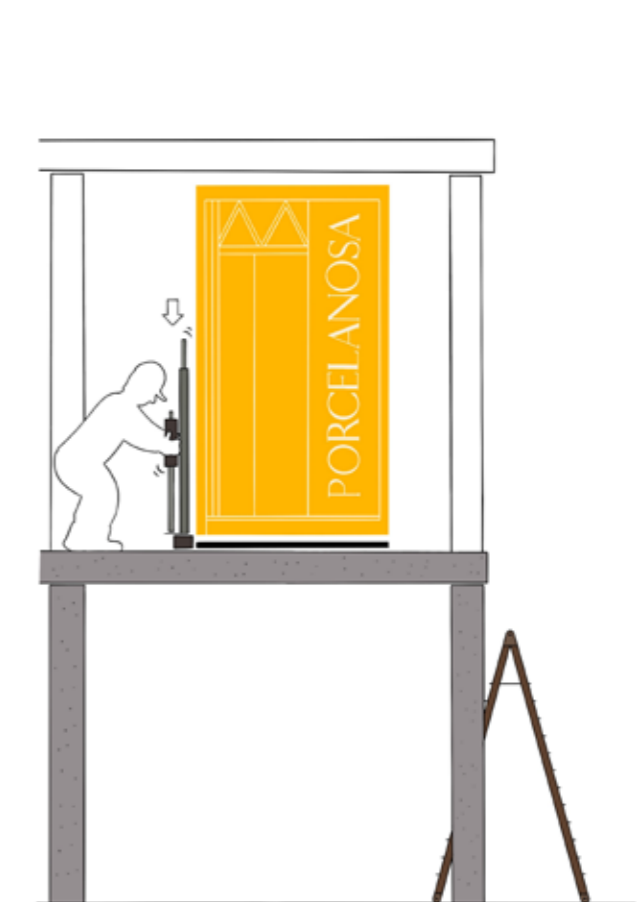
3.



4.



5.



6.

### On site installation

1. Positioning on a lifting platform.
2. Sling positioning on a platform.
3. Lifting.
4. Placing and fixing the platform on the edge of the floor slab.
5. Movement along the floor to the units definitive position.
6. Unloading and levelling.

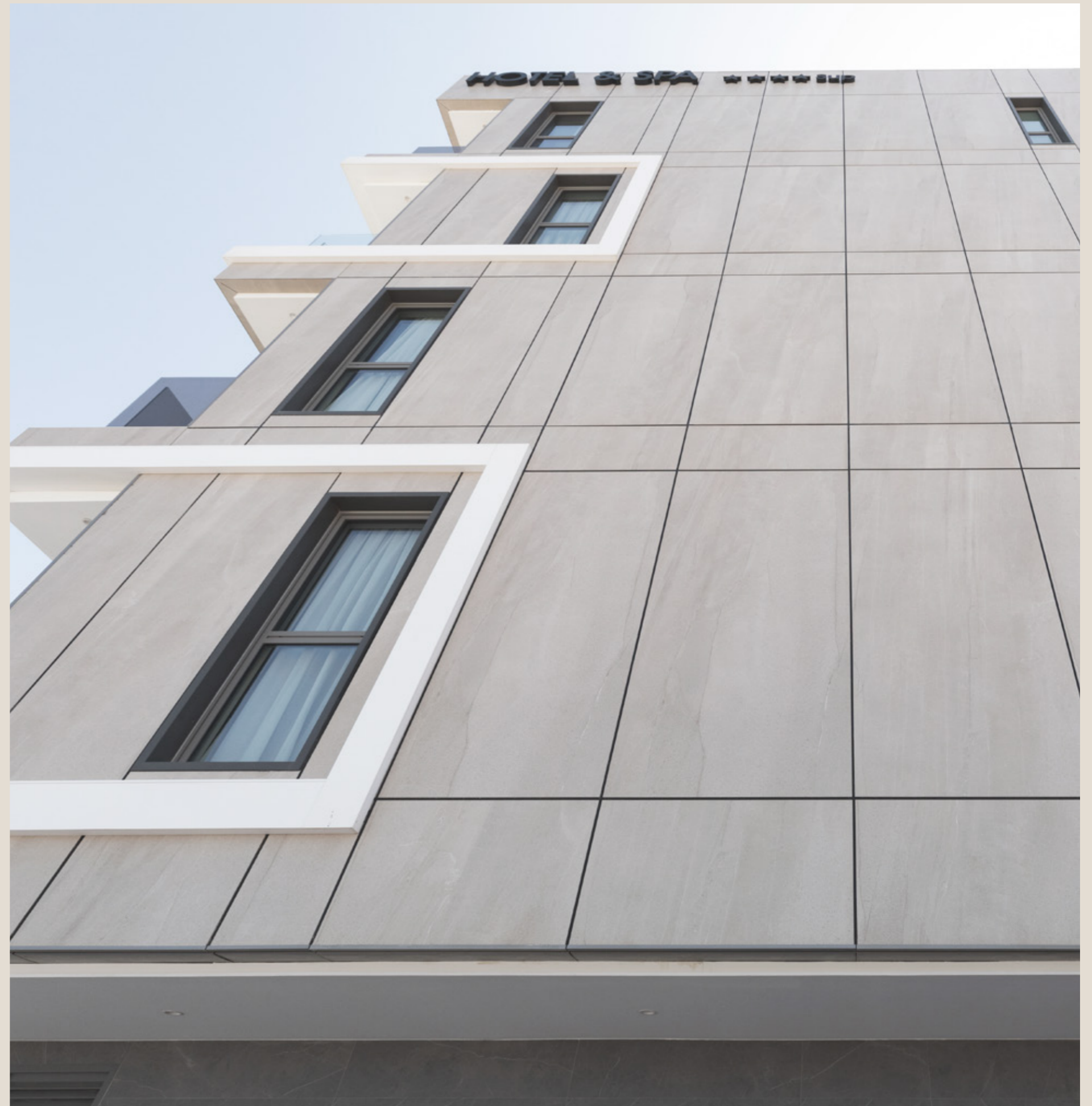
Systems

---

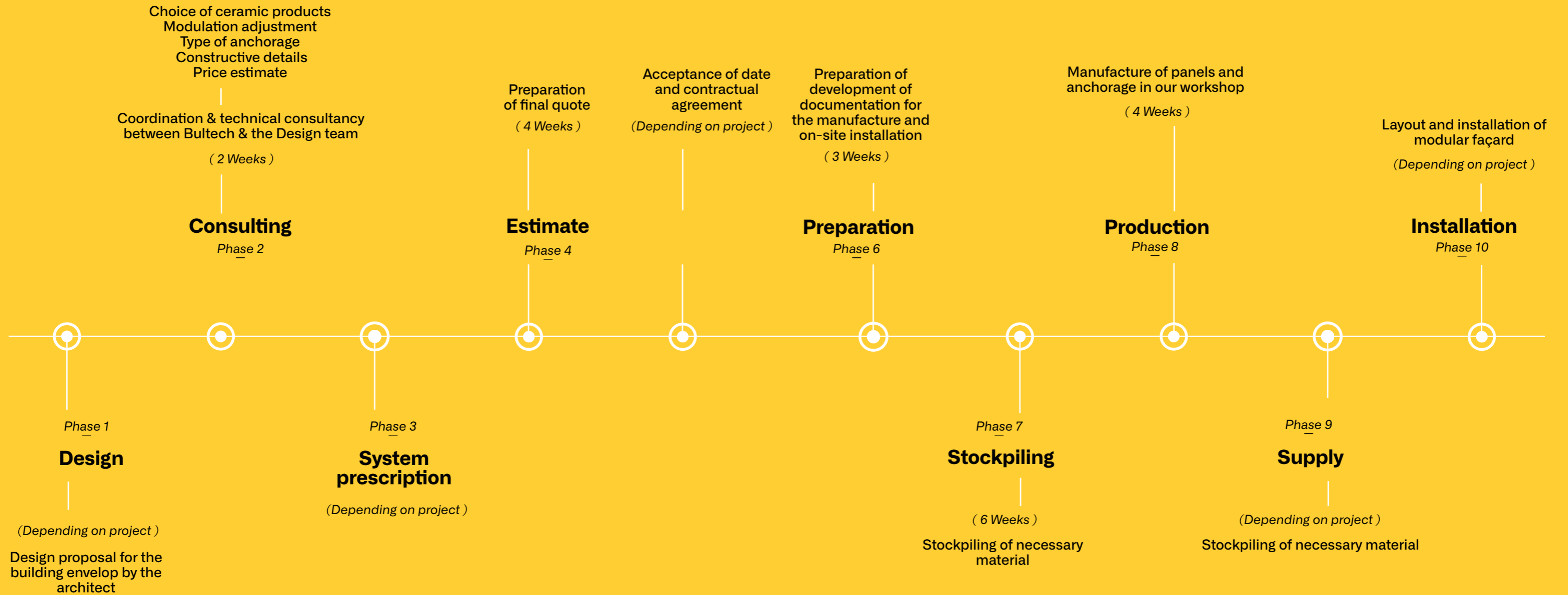
# MODFACADES

The façade modules are supplied completely finished from the factory with the insulation, structure and requested PORCELANOSA wall tile finish.

Given the use of guided anchor rails the modular system facilitates assembly and levelling of the pieces, shortening project construction deadlines.



# MODFACADES



# MODFACADES



Testing undertaken by the following institute:



**Air permeability**  
(UNE-EN 12153:2000)  
>600Pa – AE Class



**Water tightness under static air pressure**  
(UNE-EN 12155:2000)  
750Pa – RE<sub>750</sub>



**Wind load resistance**  
(UNE-EN 12179:2000)  
1.500Pa and -1.500Pa



**Fire resistance**  
(EN 13823:2010+A1:2014)  
Euroclass B-s1-d0



**Acoustic resistance without cladding**  
RA, tr: 44,2 dBA

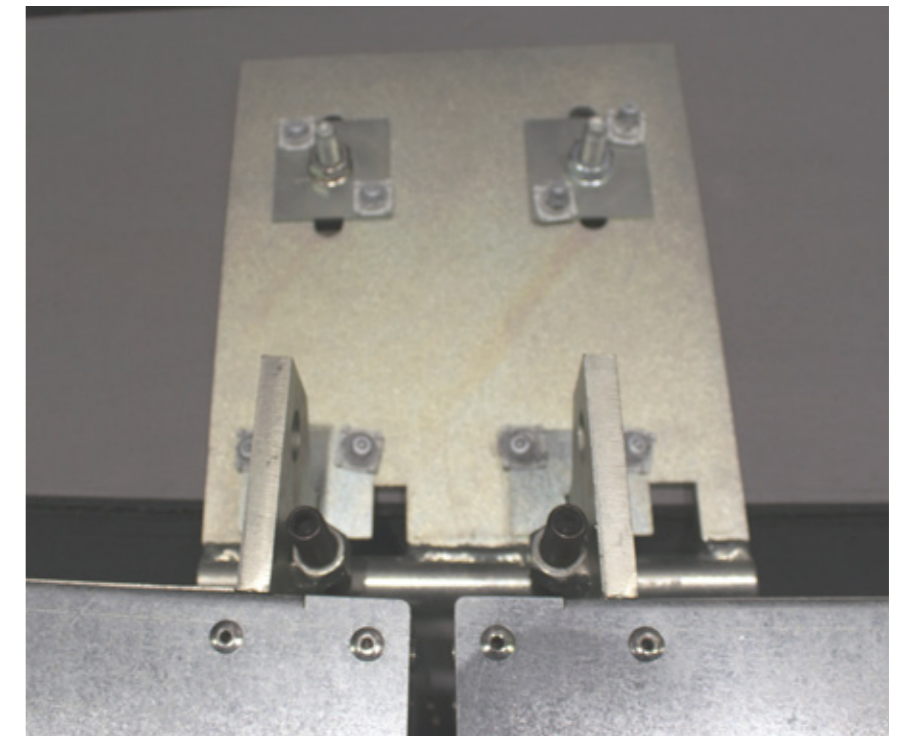
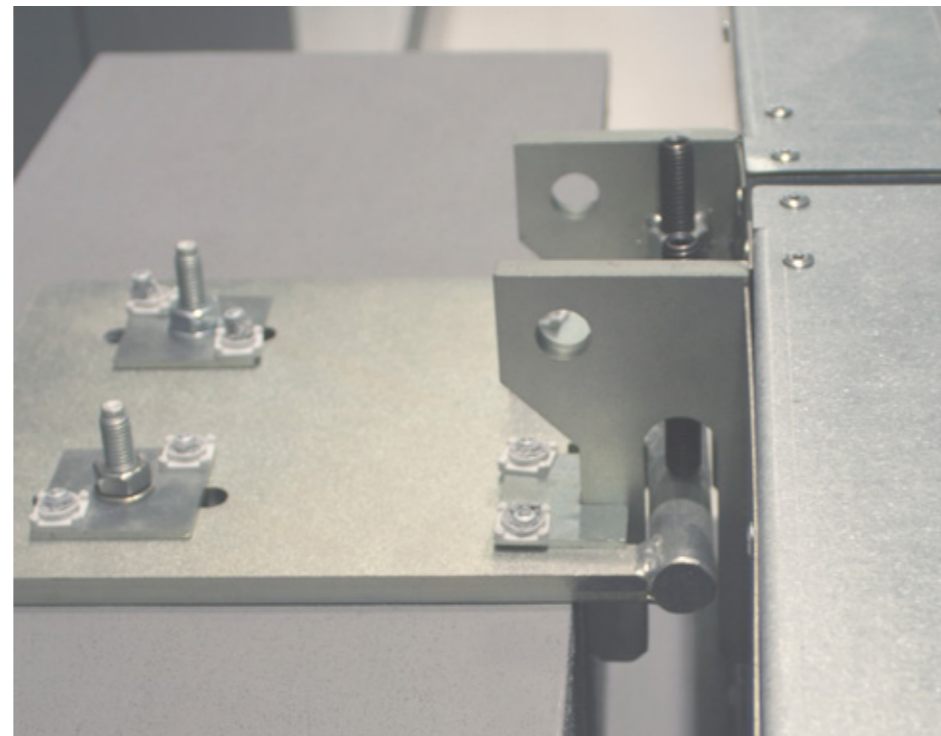


**Acoustic resistance with cladding**  
RA, tr:49,6 dBA



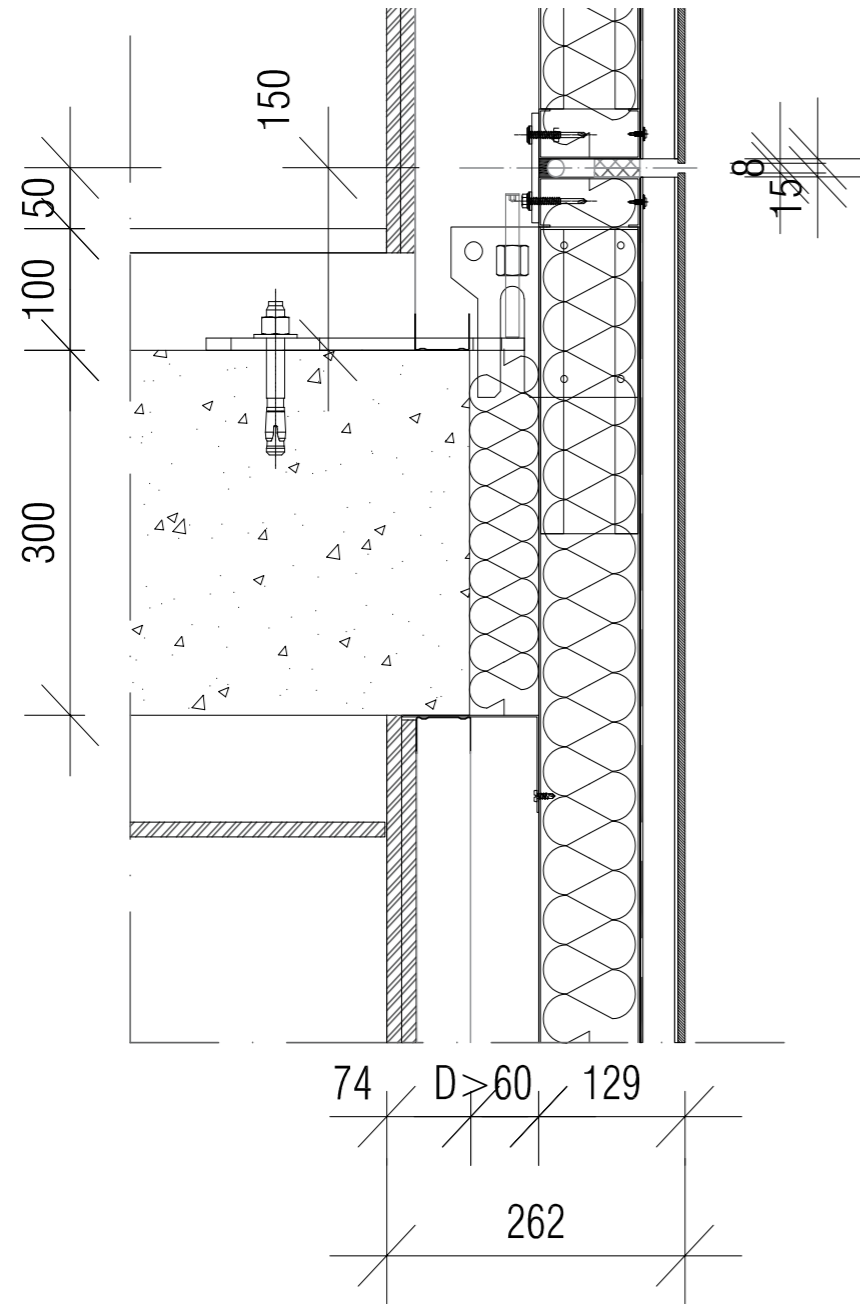
# MODFACADES

Quick and easy  
assembly on guide rails.

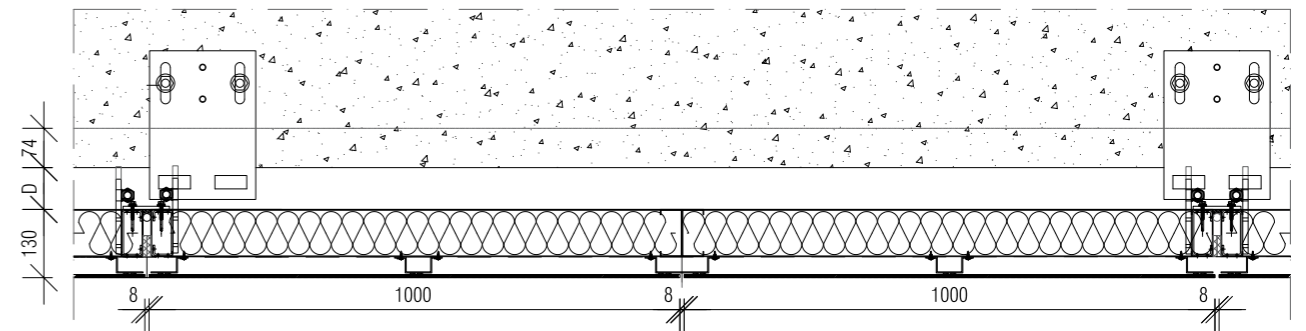




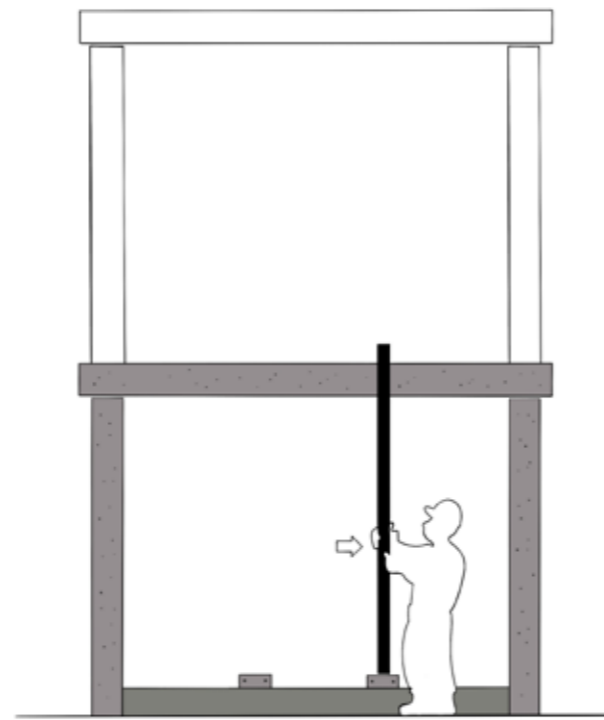




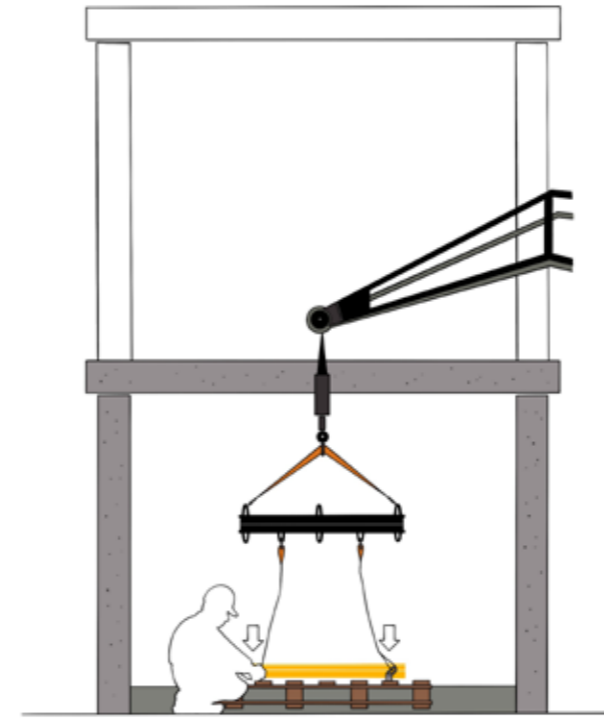
Vertical Section



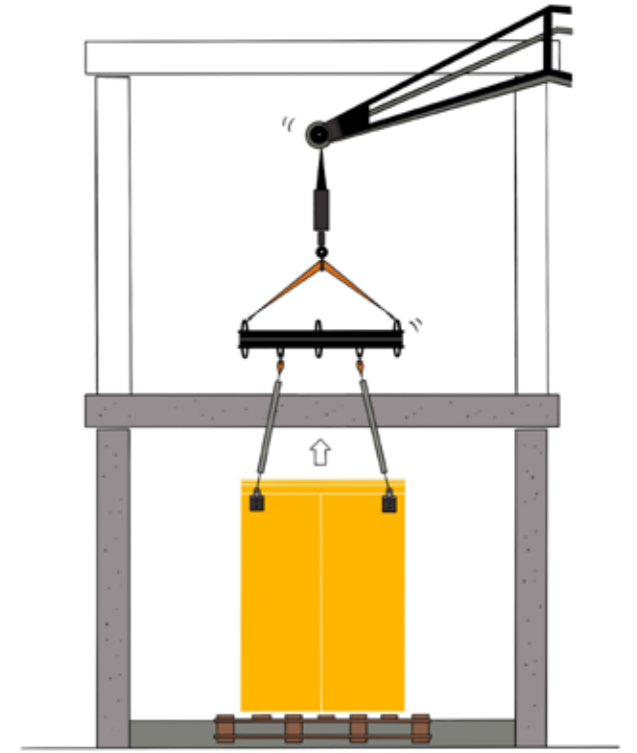
Horizontal Section



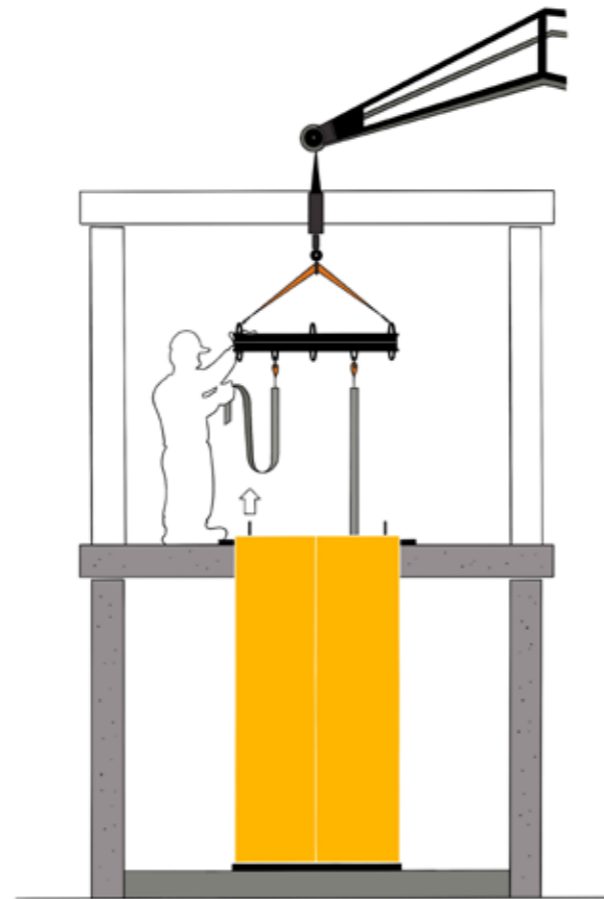
1.



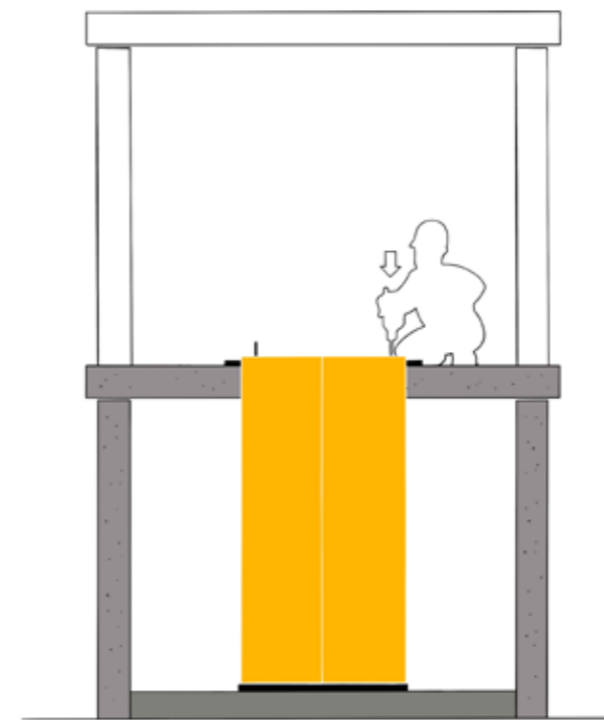
2.



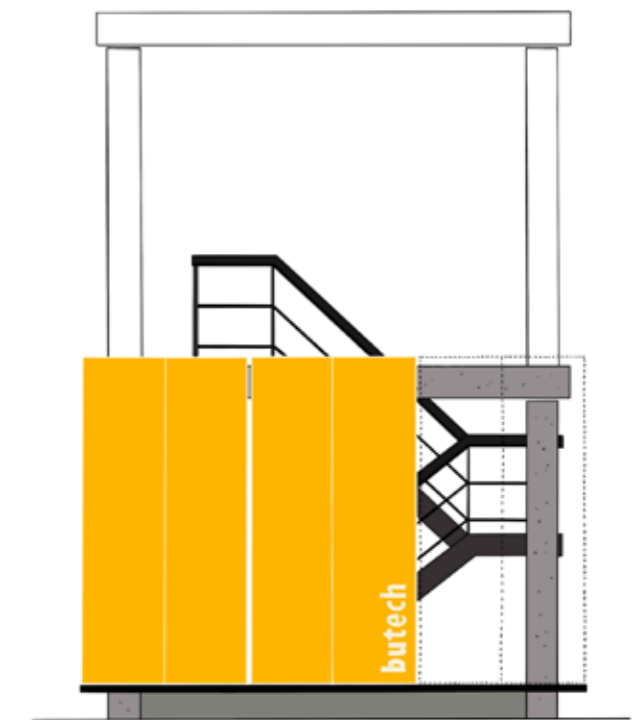
3.



4.



5.



6.

*On site installation*

1. Setting out and placement of anchorages.
2. Sling positioning for lifting.
3. Panel lifting.
4. On site installation/panel hanging.
5. Regulation and adjustment of the panels.
6. Installed panel.

# Services

---

Our services speak to:

- Tailoring the offer for every project.
- Quality.
- Efficiency.
- Sustainability
- Speed.
- Control.

All the advantages of having a single partner with the guarantee of PORCELANOSA Group.



## Engineering

BUTECH'S technical team, with extensive experience in ventilated façades and modular systems, is at the service of the PORCELANOSA Group customers in all phases of project development; from the modulation and choice of materials through to final commissioning.

A highly qualified team dedicated to the development of national and international projects.



Services

---

## Production

Cutting-edge installations for products with high added value.





Production control highly qualified personnel.



Services

---

## Quality control

Our team's expertise and the resources available to them allow us to carry out standardized tests in our own facilities and control the traceability of our products.

Scrupulous respect for the most demanding national and international standards.  
PORCELANOSA Quality and total Guarantee.







*Services*

---

## **Logistics**

Our logistic capacity and experience make it possible for us to send our projects anywhere in the world.

Perfectly packaged units, ready for transport and easy commissioning.



Technologically advanced facilities.



Services

---

## Execution

From local projects to large international projects, our teams ensure the correct execution and assembly of PORCELANOSA Offsite.

Guaranteed quality levels and execution times.

**Execution**



Rigorous controls of on-site installation.

# Projects

---

Some examples of projects that have been supplied with modular PORCELANOSA Offsite.



**Terrazas del Lago**  
Apartment building in Madrid, Spain  
Architect: MORPH Studio  
Photography: Luzestudio Fotografía

*Institut d'Optique d'Aquitaine*  
Research Institute in Talence, France  
Architects: Nicolas Ragueneau and Antoine Roux



Architects and specifiers around the world trust in Butech for the execution of their projects.



**Institut d'Optique d'Aquitaine**  
Research Institute in Talence, France  
Architects: Nicolas Ragueneau and Antoine Roux





**La Fiduciaire**  
La Fiduciaire Office building in Bordeaux, France  
Architects: Nicolas Ragueneau and Antoine Roux  
Photography: Stéphane Adam



**Berkshire House**  
Apartment building in Maidenhead, United Kingdom  
Architect: Goddard Manton Architects  
Photography: Aa Creative





*Vicarage Road Stadium  
Watford FC Football Stadium in Watford, United Kingdom  
Photography: Joel Knight*

*Shenzhen Zhongzhou*

*Mall and apartments in Shenzhen, RPC*

*Architect: Peddle Thorp*

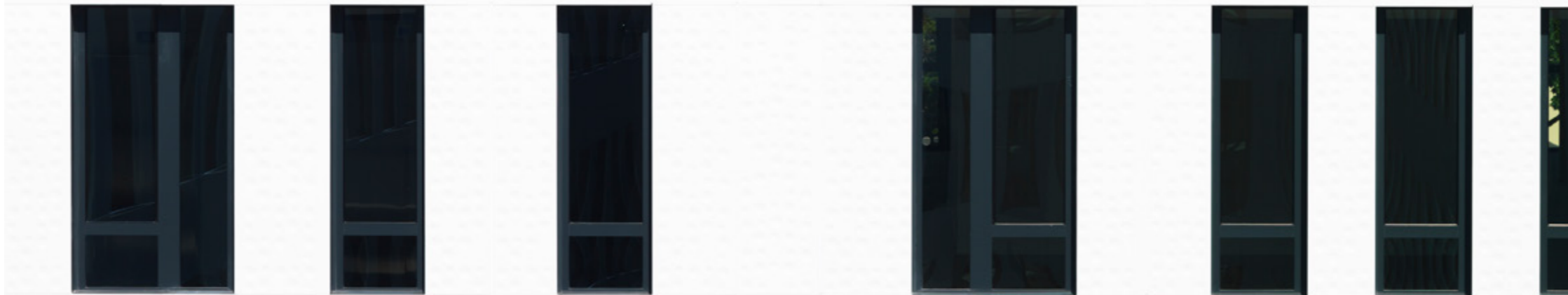
*Photography: Salva Méndez*



**Terrazas del Lago**  
Apartment building in Madrid, Spain  
Architect: MORPH Studio  
Photography: Luzestudio



*Immuable Docteur Pierre*  
Office building in Nanterre, France  
Architect: Reichen Robert Associés Archit Urb





Hotel & Spa Castillo de Peñíscola  
Hotel in Peñíscola, Spain  
Architect: Guillamón Rubert Asociados

# butech

PORCELANOSA Grupo

Ctra. Vila-real - Puebla de Arenoso  
(CV-20) Km 2,5. Vila-real (Spain)  
+34 964 53 62 00  
butech@butech.es

PORCELANOSA Group UK  
Otterspool Way  
WD25 8HL Watford (United Kingdom)  
01923 815 200  
group@porcelanosa.co.uk



[www.butech.net](http://www.butech.net)

Graphic design  
Butech

Illustrations  
Juan Alcalá

Photography  
PORCELANOSA Grupo

## Print

May 2022  
Copyright@Butech  
All rights reserved