



PORCELANOSA Grupo

Technical profiles

Solution for transitions, movements and level changes

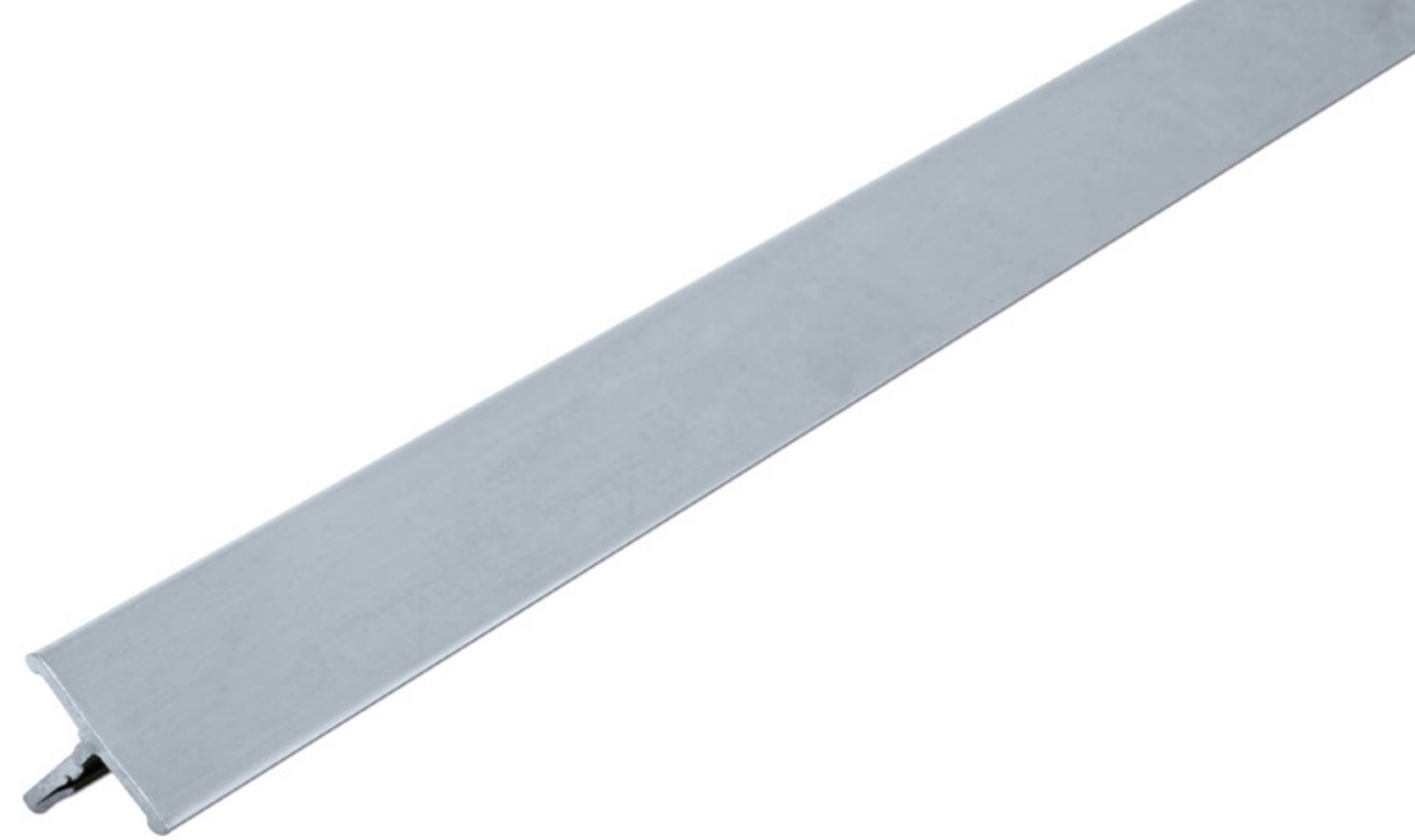
butech
PORCELANOSA Grupo

Technical profiles

Our technical profiles represent an easy solution to resolve different situations in any project.

These essential items ease the transition between porcelain tiles, level changes, steps, movement joints and cleaning.

This collection of profiles has been designed for implementing the latest trends in porcelain tiles to any concept or design.



pro-T

Transition profiles between floor tiles.
Specially recommended for porcelain tiles and wooden floors.

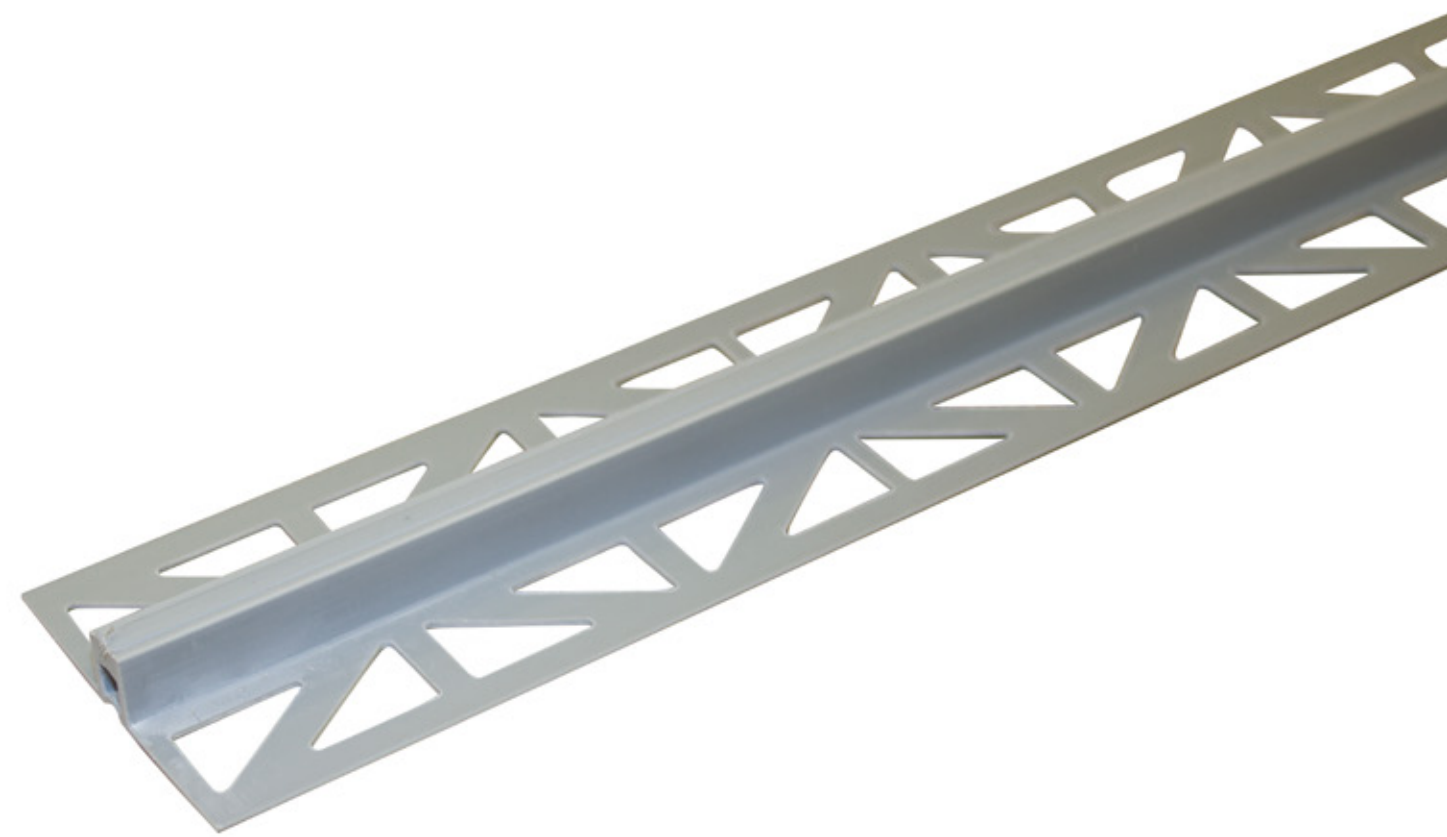


pro-level

Transition profile between two different floor levels, covering and protecting the non-glazed edge.

Specially recommended for high-traffic floors.





pro-dilata PVC

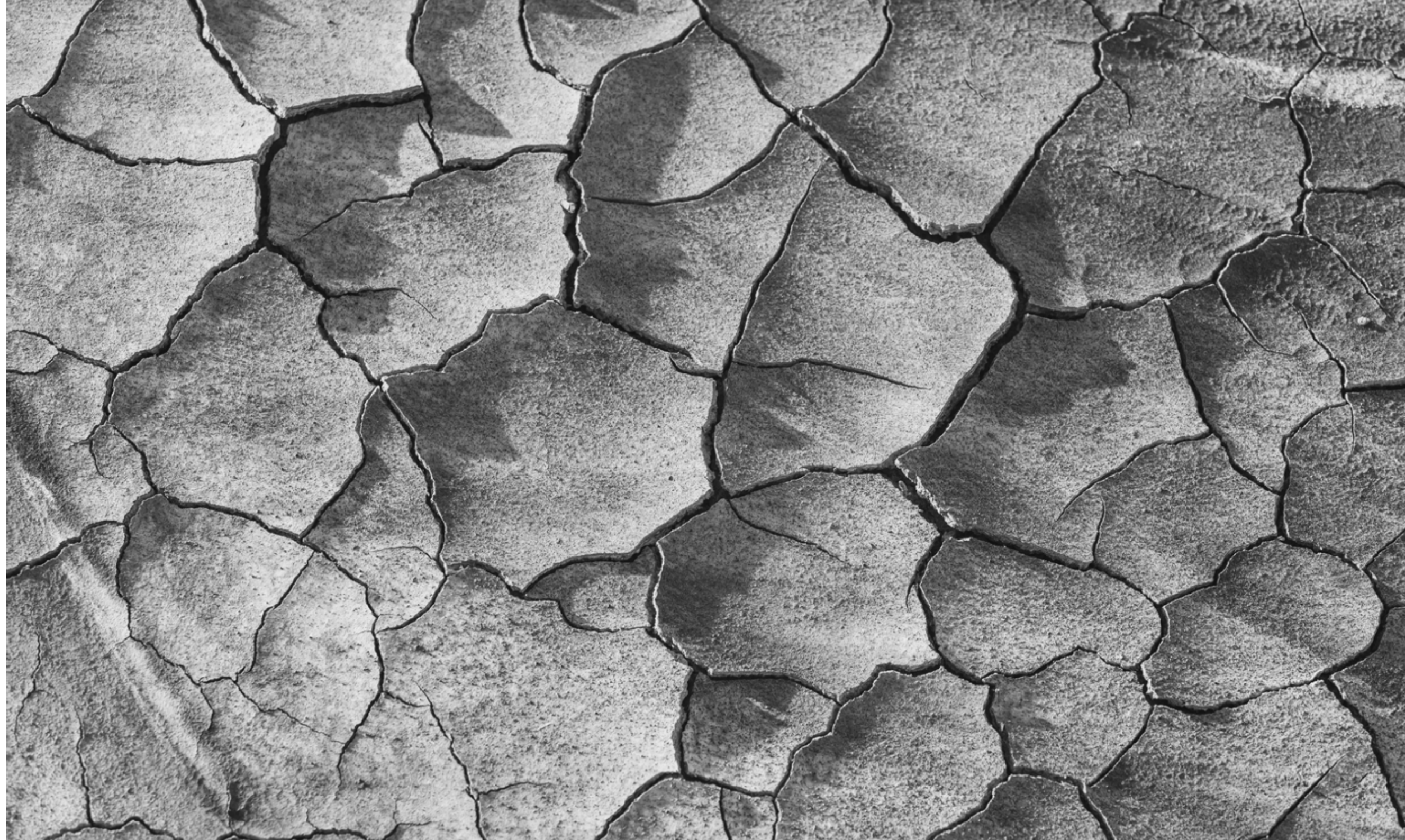
Expansion joints for porcelain floor tiles.
Made of PVC, with an elastic strip to absorb tensions on the tiles.

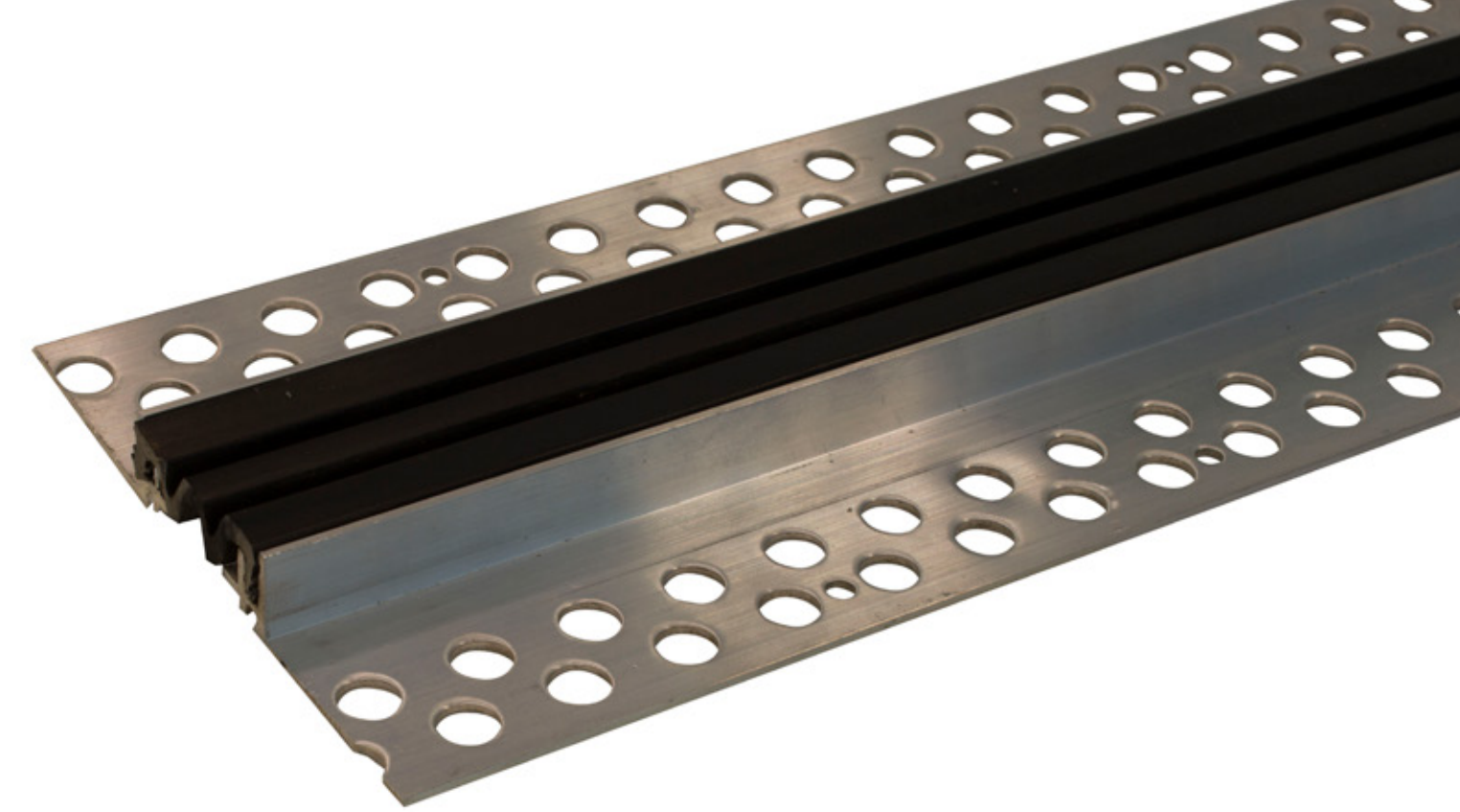


pro-dilata metal

Expansion joints for porcelain floor tiles.

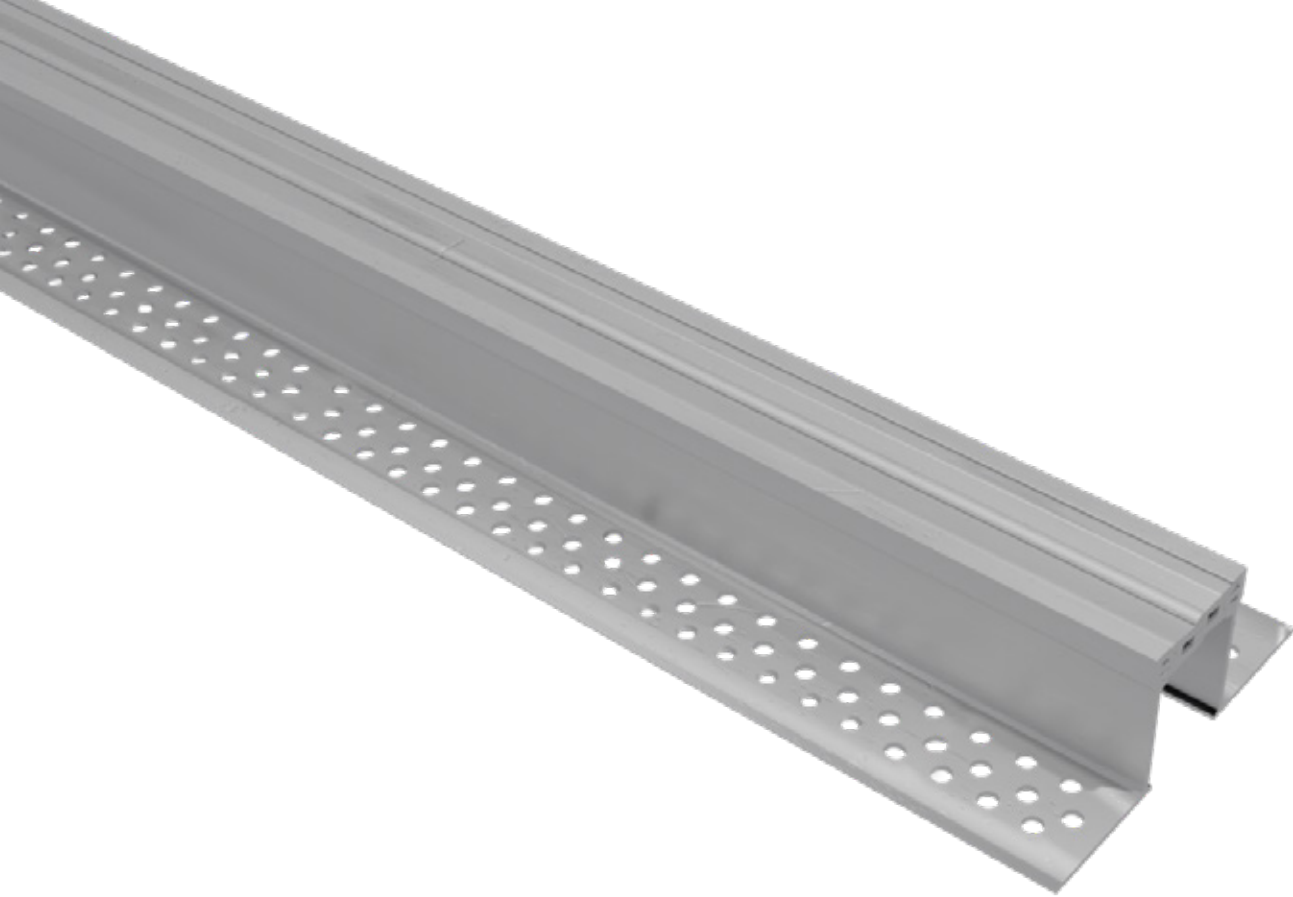
Made of METAL, with an elastic strip to absorb tensions on the tiles.





BT structural joint

Structural profiles for porcelain tiles.
Made of metal, with an elastic strip to absorb structural movements.
Uses a deformable polypropylene strip, suitable for foot traffic.



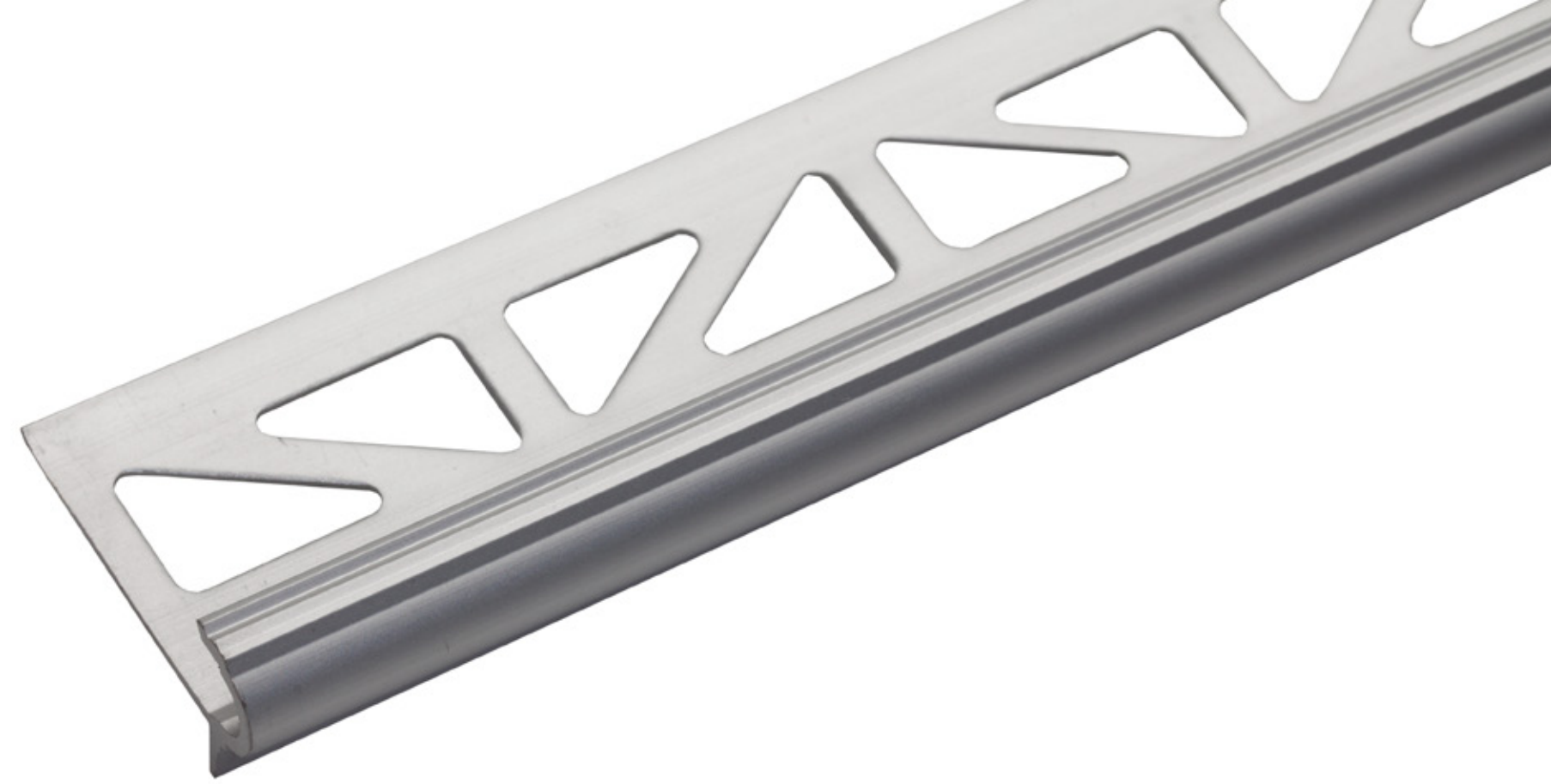
AT structural joint

Structural profiles for porcelain tiles.

Made of metal, with an elastic strip to absorb structural movements.

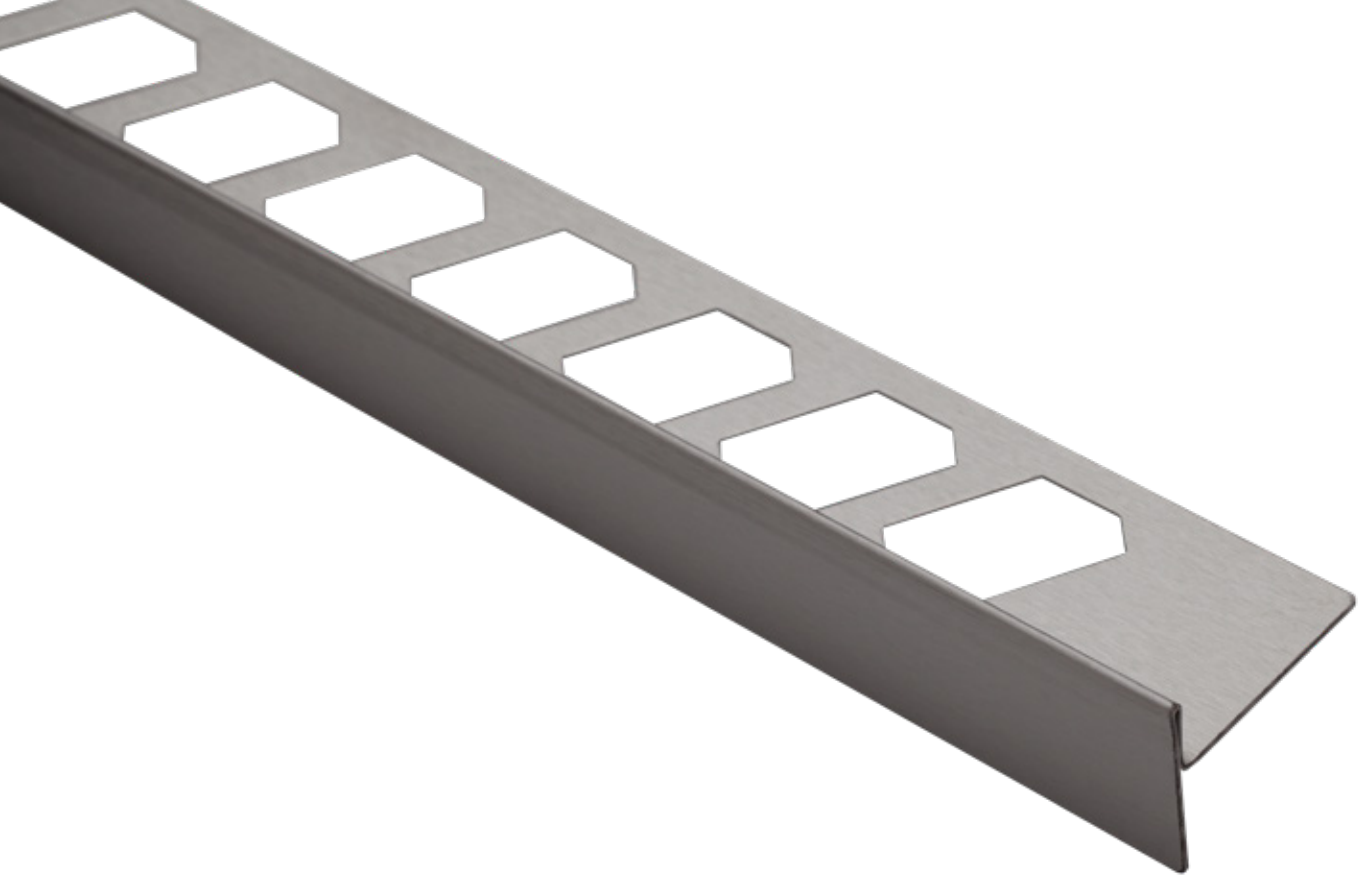
Uses a deformable strip suitable for road traffic





pro-step

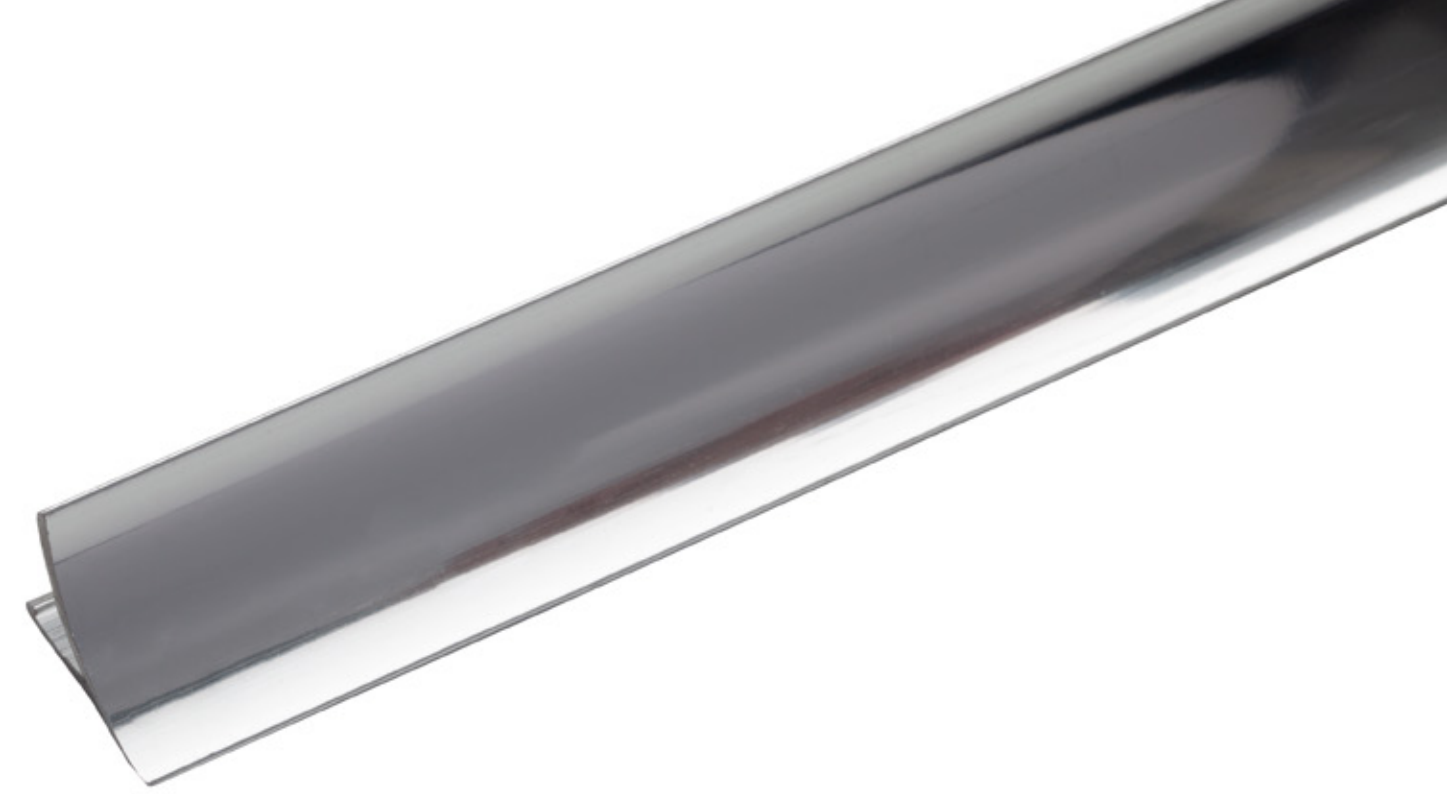
Profile for the making of stair steps. It substitutes the traditional step ceramic piece by a combination of ceramic tile and profile.



pro-shower

New range of profiles for shower trays. Designed to cover the sides of shower trays; specially for shower with only one direction slope. There are also special trims for installing glass screens.

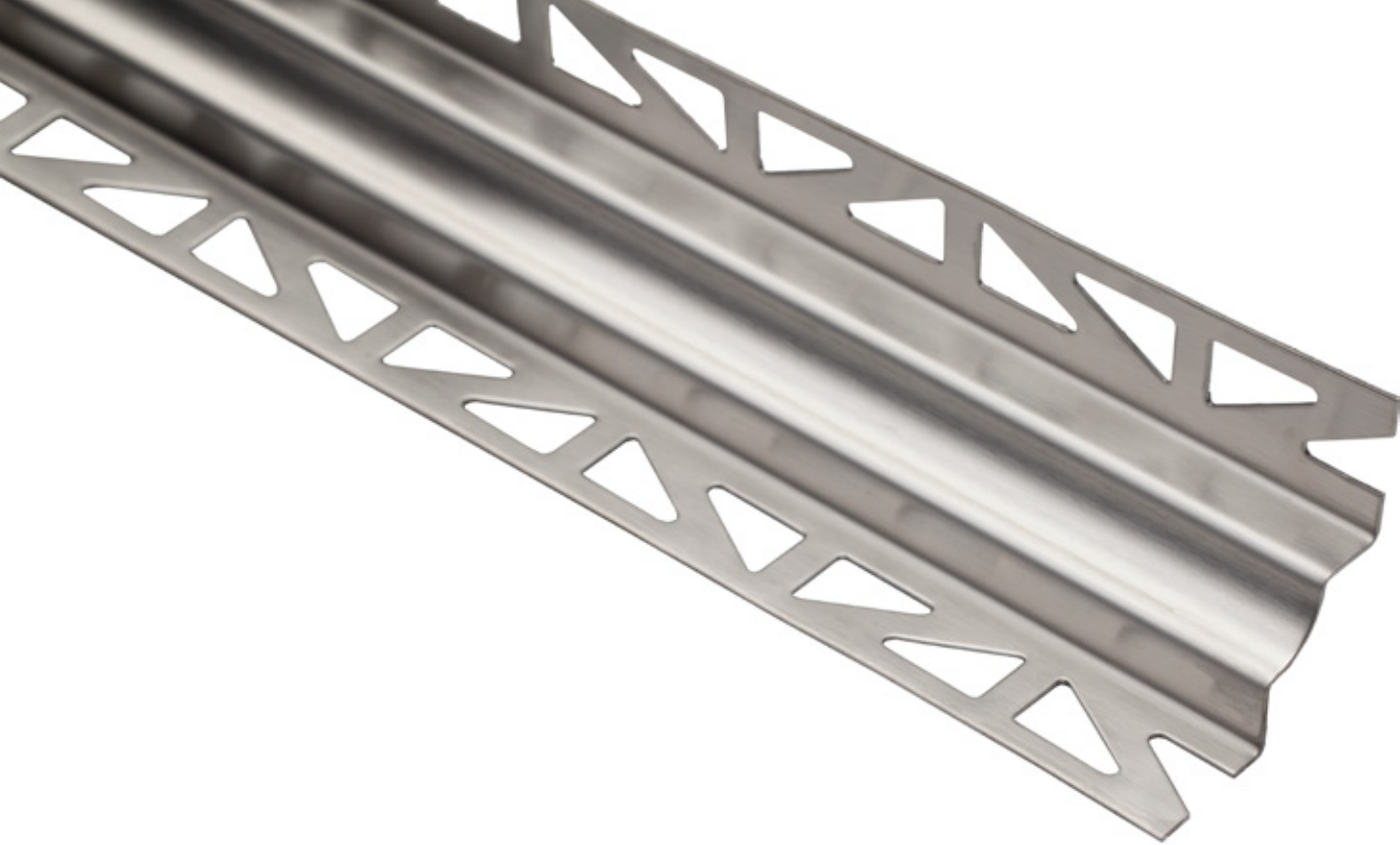




pro-sanit U1

Concave profile for installation where walls and floors meet or between wall coverings and bathtubs, shower trays or other bath elements. It substitutes the traditional curve ceramic piece.

It reduces the risk of water leakage and eases cleaning and preservation of angles between floor and wall coverings.



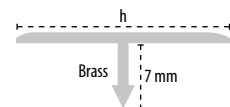
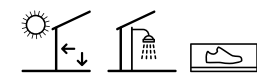
pro-sanit U2

Concave profile for installation where walls and floors meet or between wall coverings and bathtubs, shower trays or other bath elements. It substitutes the traditional curve ceramic piece.

It reduces the risk of water leakage and eases cleaning and preservation of angles between floor and wall coverings.



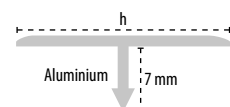
pro-T



pro-T

Chromed brass

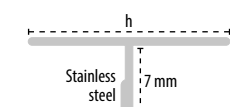
SAP	h (mm)
100005460	14
100005461	25



pro-T

Anodized aluminium silver

SAP	h (mm)
100005452	14
100005453	25



pro-T

Gloss stainless steel

SAP	h (mm)
100005462	14
100005463	25

Brushed stainless steel

SAP	h (mm)
100005464	14
100005465	25

Profile length: 2500 mm

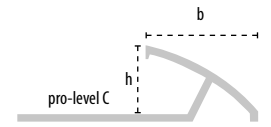
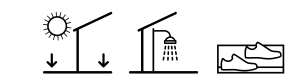
Minimum packaging: 10 profiles





pro-level

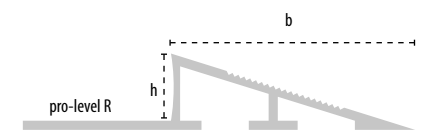
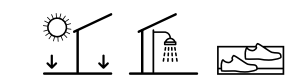
pro-level C



Anodized aluminium silver

SAP	h (mm)	b (mm)
100005426	11	15
100005427	12,5	17

pro-level R



Anodized aluminium silver

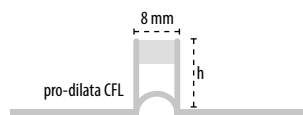
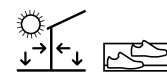
SAP	h (mm)	b (mm)
100005428	11	45
100005429	12,5	50
100005430	15	57
100005431	20	64

Profile length: 2500 mm

Minimum packaging: 10 profiles

pro-dilata

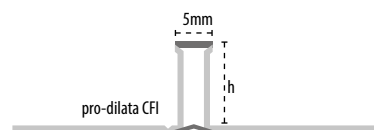
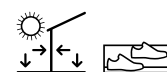
pro-dilata PVC



CFL 8 mm

SAP		h (mm)
100005685	White	12,5
100005682	Beige	10
100005686	Beige	12,5
100005690	Beige	15
100005683	Black	10
100005687	Black	12,5
100005691	Black	15
100005684	Grey	10
100005688	Grey	12,5
100005692	Grey	15

pro-dilata PVC



CFI 5 mm

SAP		h (mm)
100316178	Light grey	9
100159078	Light grey	11
100159080	Light grey	12,5
100316191	Grey	9
100159076	Grey	11
100159077	Grey	12,5
100316182	Black	9
100159081	Black	11
100159082	Black	12,5
100316183	Beige	9
100159074	Beige	11
100159075	Beige	12,5

Profile length: 2500 mm

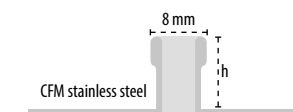
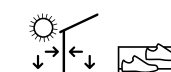
Minimum packaging: 10 profiles





pro-dilata

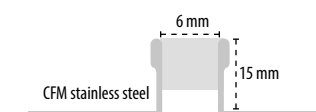
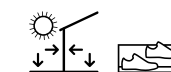
pro-dilata stainless steel



CFM 8 mm

SAP	h (mm)
100005714	10
100005715	12,5
100005716	15
100005717	20

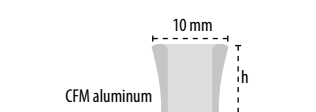
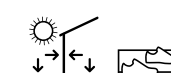
pro-dilata stainless steel nc



CFM 11,6 mm

SAP	h (mm)
100280152	15

pro-dilata aluminium



CFM 10 mm

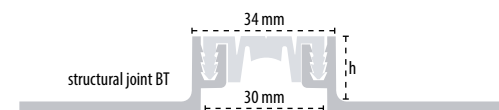
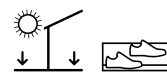
SAP	h (mm)
100005698	10
100005699	12,5
100005700	15
100005702	20

Profile length: 2500 mm

Minimum packaging: 10 profiles

structural joints

structural joints BT

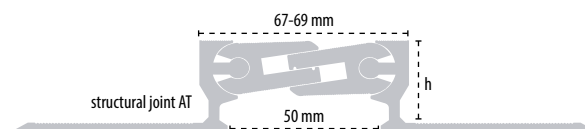
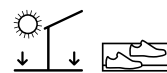


BT-40

SAP		h (mm)
100332105	Grey	22
100332093	Grey	40

Accepted traffic: Pedestrian and vehicles with pneumatic wheels up to 35 kN.

structural joints AT



AT-50

SAP		h (mm)
100324422		22
100324431		50

Accepted traffic: Pedestrian, vehicles with pneumatic wheels up to 300 kN and forklift trucks or solid wheeled hand pallet trucks up to 9 kg/mm.

BT profile length: 2500 mm

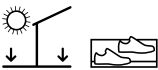
AT profile length: 2500 mm



pro-step



pro-step



Stainless steel M2

SAP	h (mm)
100005523	11

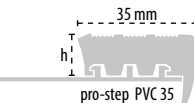
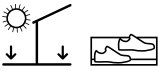
pro-step



Anodized aluminium silver M1

SAP	h (mm)
100005509	11
100067688	13,5

pro-step



PVC 35

SAP	Grey	h (mm)
100005482		11

Profile length: 2500 mm

Minimum packaging: 10 profiles

pro-shower



pro-shower floor



Chromed stainless steel

SAP		h1 (mm)	h2 (mm)
100159068	Left side	12,5	24
100160219	Right side	12,5	24
100159069	Left side	12,5	32
100160280	Right side	12,5	32

Profile length h2=24 980 mm
 Profile length h2=32 1480 mm

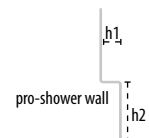
Brushed stainless steel

SAP		h1 (mm)	h2 (mm)
100159067	Left side	12,5	32
100160218	Right side	12,5	32

Profile length h2=32 1480 mm



pro-shower wall



Chromed stainless steel

SAP		h1 (mm)	h2 (mm)
100159100	Left side	12,5	32
100160248	Right side	12,5	32

Profile length h2=32 1480 mm

Brushed stainless steel

SAP		h1 (mm)	h2 (mm)
100159088	Left side	12,5	32
100160246	Right side	12,5	32

Profile length h2=32 1480 mm

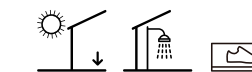
BT profile length: 3000 mm

AT profile length: 2500 mm





pro-sanit U1



pro-sanit U1 alu

High gloss aluminum

SAP		h (mm)
100062075		16
100062076		22

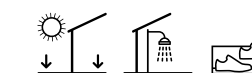
Anodized aluminium silver

SAP		h (mm)
100062077		16
100062078		22

Lacquered aluminium

SAP		h (mm)
100062079	white	16
100062080	white	22

pro-sanit U2



pro-sanit U2

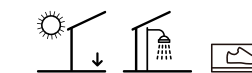
Stainless steel

SAP		h (mm)
100005566	Gloss	12,5
100005569	Brushed	12,5

Stainless steel corner

SAP		h (mm)
100005567	Gloss outer	12,5
100005568	Gloss inner	12,5
100005570	Brushed outer	12,5
100005571	Brushed internal	12,5

pro-sanit U2



pro-sanit U2

PVC

SAP		h (mm)
100005542	white	11 x 9



BY APPOINTMENT TO
H.R.H. THE PRINCE OF WALES
MANUFACTURER AND DISTRIBUTOR
OF CERAMIC TILES AND BUILDING PRODUCTS.
PORCELANOSA GROUP LIMITED

PORCELANOSA Grupo

butech building technology, s.a.u.

Ctra. Vila-real - Puebla de Arenoso (CV-20), Km. 2.5 · Apartado de Correos 297 · 12540 Vil-areal, Castellón - Spain.
Teléfono (+34) 964 53 62 00 · Fax: (+34) 964 53 00 34 · E-mail: butech@butech.es · www.butech.net